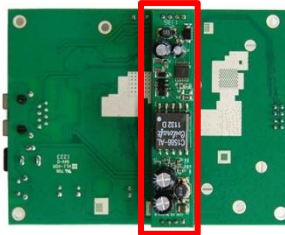


AP91-5G-PoE



802.11n 1x1 Outdoor PCB



PoE Module

- 500mW High Power
- LED PIN Out
- MMCX Connector
- Standard 802.3at PoE

General Information						
CPU	Atheros AR7240					
Flash	8MB					
RAM	32MB					
Interface	1 x RJ45 & 1x Reset					
Serial Interface	4 Pin Header for RS232					
LED	1x LAN, 1x Wireless, 4x Signal indicate					
Antenna Connector	MMCX					
Output Power (dBm)	802.11a	6Mbps	27 ± 2		24Mbps	27 ± 2
		9Mbps	27 ± 2		36Mbps	25 ± 2
		12Mbps	27 ± 2		48Mbps	23 ± 2
		18Mbps	27 ± 2		54Mbps	22 ± 2
	802.11n	MCS0	27 ± 2			
		MCS3	27 ± 2			
		MCS8	27 ± 2			
		MCS9	27 ± 2			
		MCS12	26 ± 2			
		MCS15	21 ± 2			
Sensitivity (dB)	802.11a	6Mbps	-92		24Mbps	-81
		9Mbps	-89		36Mbps	-78
		12Mbps	-86		48Mbps	-75
		18Mbps	-83		54Mbps	-73
	802.11n	MCS0	-94			
		MCS3	-87			
		MCS8	-93			
		MCS9	-91			
		MCS12	-82			
		MCS15	-73			
Operation Mode	AP	Client	WISP	WDS Bridge		
Software	Site Survey Bandwidth Control SNMP v1/v2 support adjustable output power Distance Adjustment Radius (802.1x) VLAN (Data+ Management tag)					
PoE	Standard 802.3at PoE					