

MGate 5101-PBM-MN PROFIBUS Master-to-Modbus TCP Gateway User's Manual

Edition 4.1, May 2017

www.moxa.com/product



© 2017 Moxa Inc. All rights reserved.

MGate 5101-PBM-MN PROFIBUS Master-to-Modbus TCP Gateway User's Manual

The software described in this manual is furnished under a license agreement and may be used only in accordance with the terms of that agreement.

Copyright Notice

© 2017 Moxa Inc. All rights reserved.

Trademarks

The MOXA logo is a registered trademark of Moxa Inc.
All other trademarks or registered marks in this manual belong to their respective manufacturers.

Disclaimer

Information in this document is subject to change without notice and does not represent a commitment on the part of Moxa.

Moxa provides this document as is, without warranty of any kind, either expressed or implied, including, but not limited to, its particular purpose. Moxa reserves the right to make improvements and/or changes to this manual, or to the products and/or the programs described in this manual, at any time.

Information provided in this manual is intended to be accurate and reliable. However, Moxa assumes no responsibility for its use, or for any infringements on the rights of third parties that may result from its use.

This product might include unintentional technical or typographical errors. Changes are periodically made to the information herein to correct such errors, and these changes are incorporated into new editions of the publication.

Technical Support Contact Information

www.moxa.com/support

Moxa Americas

Toll-free: 1-888-669-2872
Tel: +1-714-528-6777
Fax: +1-714-528-6778

Moxa Europe

Tel: +49-89-3 70 03 99-0
Fax: +49-89-3 70 03 99-99

Moxa India

Tel: +91-80-4172-9088
Fax: +91-80-4132-1045

Moxa China (Shanghai office)

Toll-free: 800-820-5036
Tel: +86-21-5258-9955
Fax: +86-21-5258-5505

Moxa Asia-Pacific

Tel: +886-2-8919-1230
Fax: +886-2-8919-1231

Table of Contents

1. Introduction	1-1
Overview	1-2
Package Checklist	1-2
Product Features	1-2
2. Hardware	2-1
Power Input and Relay Output Pinouts	2-2
LED Indicators	2-2
Dimensions	2-3
Pin Assignments	2-3
PROFIBUS Pin Assignment	2-3
Console (RS-232) Pin Assignment	2-3
Mounting the Unit	2-4
Specifications	2-4
Reset Button	2-5
3. Getting Started	3-1
Connecting the Power	3-2
Connecting PROFIBUS Devices	3-2
Connecting to a Network	3-2
Logging in to the Web Console	3-2
Network Settings	3-3
Data Transfer	3-3
PROFIBUS Network	3-3
Modbus TCP Configuration	3-3
Configuring the MGate	3-4
MXStudio	3-4
4. Configuration (MGate Manager)	4-1
Installing the Software	4-2
Starting MGate Manager	4-4
Connecting to the Unit	4-6
Modifying the Configuration	4-6
Password Protection	4-7
Configure Device	4-7
Network Settings	4-8
PROFIBUS Settings	4-9
Modbus Settings	4-19
Data Exchange Between Modbus TCP and PROFIBUS	4-22
System Settings	4-25
Load Default	4-31
Monitoring Modbus Activity	4-32
Diagnose	4-34
Create/Modify the Configuration File	4-36
Upgrading the Firmware	4-37
Import/Export	4-38
5. Configuration (Web Console)	5-1
PROFIBUS (Protocol Settings - PROFIBUS)	5-2
GSD Management (Protocol Settings - GSD Management)	5-3
PROFIBUS Control (System Management - Maintenance - PROFIBUS Control)	5-3
Ping (System Management - Maintenance - Ping)	5-4
Certificate (System Management - Certificate)	5-4
I/O Data View	5-4
PROFIBUS Live List	5-4
6. Configuration (Text Mode Console)	6-1

Introduction

Welcome to the MGate 5101-PBM-MN line of PROFIBUS to Modbus TCP gateways. All models feature easy protocol conversion from PROFIBUS to Modbus TCP.

This chapter is an introduction to the MGate 5101-PBM-MN and includes the following sections:

- **Overview**
- **Package Checklist**
- **Product Features**

Overview

The MGate 5101-PBM-MN is a line of protocol gateways that provides users with the following features:

Protocol conversion between PROFIBUS and Modbus TCP

The MGate 5101-PBM-MN Series products can be used to connect Modbus TCP and PROFIBUS devices to provide PROFIBUS devices with remote maintenance capability.

Web console or Windows utility for easy setup and traffic monitoring

A Windows utility is provided to make configuration and operation of the MGate 5101-PBM-MN as easy as possible. The utility uses TCP/IP network to connect MGate 5101-PBM-MN unit.

Package Checklist

All models of the MGate 5101-PBM-MN Series are shipped with the following items:

Standard Accessories:

- 1 MGate 5101-PBM-MN PROFIBUS-to-Modbus TCP gateway
- Documentation and software CD
- Quick installation guide
- Warranty card

Optional Accessories:

- DR-45-24: 45W/2A DIN-rail 24 VDC power supply with universal 85 to 264 VAC input
- DR-75-24: 75W/3.2A DIN-rail 24 VDC power supply with universal 85 to 264 VAC input
- DR-120-24: 120W/5A DIN-rail 24 VDC power supply with 88 to 132 VAC/176 to 264 VAC input by switch
- WK-36-02: Wall mounting kit

Note: Notify your sales representative if any of the above items are missing or damaged.

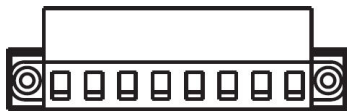
Product Features

- Protocol conversion between PROFIBUS and Modbus TCP
- Automatic scan of PROFIBUS devices and easy configuration
- Redundant dual DC power inputs and relay output supported
- Embedded data packet analyzer and diagnostic tool
- Web-based GUI for I/O data visualization
- -40 to 75°C wide operating temperature models available
- Supports SNMP v1, v2, v3, and private MIB

The following topics are covered in this chapter:

- ❑ **Power Input and Relay Output Pinouts**
- ❑ **LED Indicators**
- ❑ **Dimensions**
- ❑ **Pin Assignments**
 - PROFIBUS Pin Assignment
 - Console (RS-232) Pin Assignment
- ❑ **Mounting the Unit**
- ❑ **Specifications**
- ❑ **Reset Button**

Power Input and Relay Output Pinouts

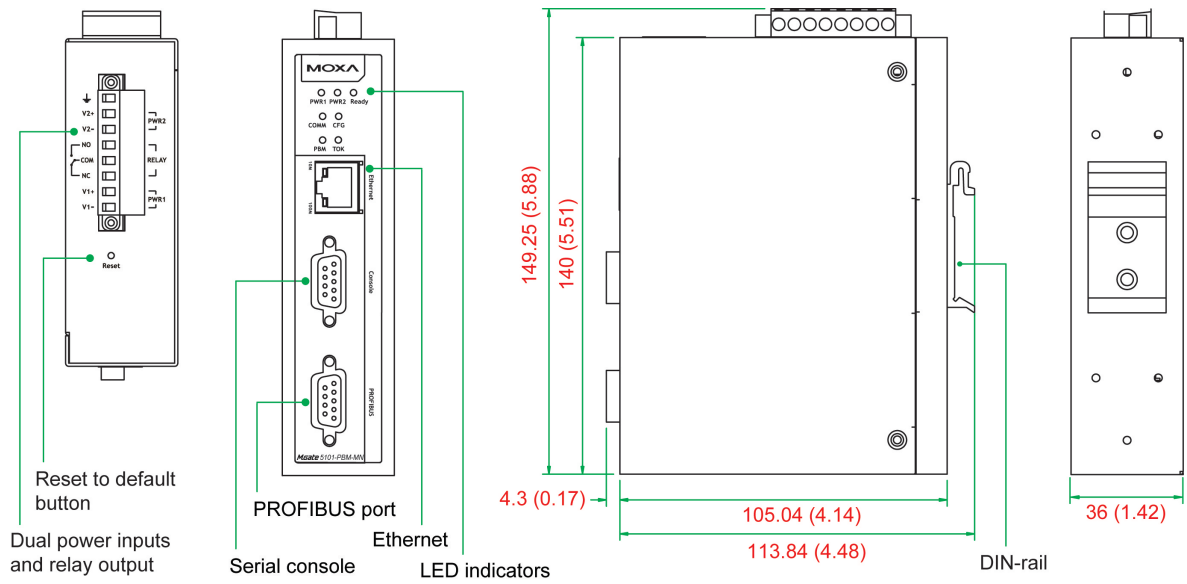


	V2+	V2-				V1+	V1-
Shielded Ground	DC Power Input 2	DC Power Input 2	N.O.	Common	N.C.	DC Power Input 1	DC Power Input 1

LED Indicators

LED	Color	Description
PWR1	Green	Power is on
	Off	Power is off
PWR2	Green	Power is on
	Off	Power is off
Ready	Green	Steady on: Power is on and the MGate is functioning normally Blinking: The MGate has been located by the MGate Manager's Location function
	Red	Steady on: Power is on and the MGate is booting up Blinking: Indicates an IP conflict, or DHCP or BOOTP server is not responding properly
	Off	Power is off or fault condition exists
COMM	Green	Steady-on: Data exchange with all slaves Blinking: Data exchange with at least one slave (not all configured slaves can communicate with gateway)
	Red	Bus control error
	Off	No data exchange
CFG	Green	PROFIBUS configuration OK
	Off	No PROFIBUS configuration
PBM	Green	Steady-on: PROFIBUS master is in OPERATE mode Blinking: PROFIBUS master is in CLEAR mode
	Red	PROFIBUS master is in STOP mode
	Off	PROFIBUS master is offline
TOK	Green	Gateway holds the PROFIBUS token
	Off	Gateway is waiting for the PROFIBUS token.
Ethernet	Green	Steady-on: 100 Mbps, no data is transmitting. Blinking: 100 Mbps, data is transmitting
	Amber	Steady: 10 Mbps, no data is transmitting. Blinking: 10 Mbps, data is transmitting.
	Off	Ethernet cable is disconnected.

Dimensions



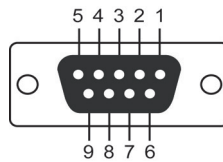
Unit = mm (inch)

Pin Assignments

PROFIBUS Pin Assignment

The MGate 5101-PBM-MN Series use female DB9 serial port to connect to PROFIBUS devices.

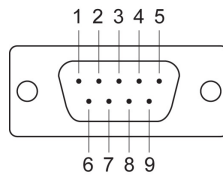
PIN	Signal Name
1	N.C.
2	N.C.
3	PROFIBUS D+
4	RTS
5	Signal common
6	5V
7	N.C.
8	PROFIBUS D-
9	N.C.



Console (RS-232) Pin Assignment

The MGate 5101-PBM-MN Series use DB9 connector to connect to PC to configure device.

Pin	RS-232
1	DCD
2	RXD
3	TXD
4	DTR
5	GND
6	DSR
7	RTS
8	CTS
9	-

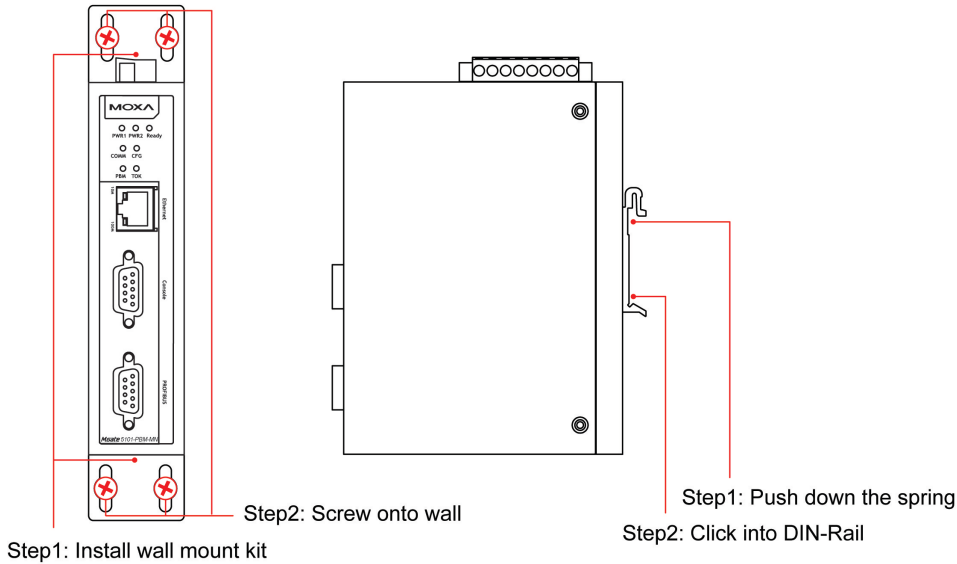


Mounting the Unit

The MGate 5101-PBM-MN Series is designed to be attached to a DIN-Rail or mounted on a wall. For DIN-Rail mounting, push down the spring and properly attach it to the DIN-Rail until it “snaps” into place. For wall mounting, install the wall mount kit (optional) first, and then screw the device onto the wall. The following figure illustrates the two mounting options:

Wall Mount Installation

DIN-Rail Installation



Specifications

Ethernet Interface

- Number of Ports:** 1
- Speed:** 10/100 Mbps, Auto MDI/MDIX
- Connector:** 8-pin RJ45
- Magnetic Isolation Protection:** 1.5 kV (built-in)
- Modbus TCP:**

Operation Modes: Modbus TCP Slave/Master

- Max. Number of Connections:**
- MGate as Modbus TCP Master: 32 connections
- MGate as Modbus TCP Slave: 16 connections

PROFIBUS Interface

- Protocol:** PROFIBUS DP-V1 Master
- Number of Ports:** 1
- Data Rate:** 9600 bps to 12 Mbps
- Connector:** DB9 female
- Isolation:** 2 kV (built-in)

Serial Signals (Serial Console)

RS-232: TxD, RxD, RTS, CTS, DTR, DSR, DCD, GND

Software

- Configuration Options:** Serial Console, Windows Utility, Web Console (HTTP/HTTPS), Telnet/SSH Console
- Utilities:** MGate Manager for Windows 2000/XP/2003/Vista/Server 2008/7/8 (x86/x64), Windows Server 2008 R2/2012 (x64)
- Support:** AutoScan, MXview, SNMP (v1, v2, v3), Private MIB

Physical Characteristics

Housing: Metal, IP30 protection

Weight: 500 g

Dimensions: 36 x 105 x 140 mm (1.42 x 4.14 x 5.51 in)

Relay Alarm Circuit: 3-pin circuit with current-carrying capacity of 2 A @ 30 VDC

Environmental Limits

Operating Temperature:

Standard Models: 0 to 60°C (32 to 140°F)

Wide Temp. Models: -40 to 75°C (-40 to 167°F)

Storage Temperature: -40 to 85°C (-40 to 185°F)

Ambient Relative Humidity: 5 to 95% (non-condensing)

Altitude: Up to 2000 m (795 hPa), higher altitudes on demand

Note: Please contact Moxa if you require products guaranteed to function properly at higher altitudes.

Power Requirements

Input Voltage: 12 to 48 VDC

Power Connector: Terminal block

Power Consumption: 365 mA @ 12 VDC

Standards and Certifications

Safety: UL 60950-1, EN 60950-1

Hazardous Location:

UL/cUL Class 1 Division 2 Groups A/B/C/D,

ATEX Zone 2 Ex nA nC IIC T3 Gc,

IECEX

EMC: CE, FCC

EMI: EN 55032 Class A, FCC Part 15 Subpart B Class A

EMS:

EN 55024,

IEC 61000-4-2 ESD: Contact: 4 kV; Air: 8 kV

IEC 61000-4-3 RS: 80 MHz to 1 GHz: 3 V/m

IEC 61000-4-4 EFT: Power: 2 kV; Signal: 1 kV

IEC 61000-4-5 Surge: Power: 2 kV

IEC 61000-4-6 CS: 150 kHz to 80 MHz: 10 V/m

IEC 61000-4-8 PFMF

Shock: IEC 60068-2-27

Freefall: IEC 60068-2-32

Vibration: IEC 60068-2-6

Reliability

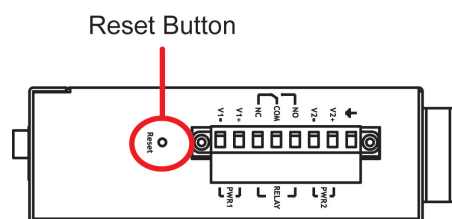
MTBF (mean time between failures): 1,082,881 hrs

Warranty

Warranty Period: 5 years

Details: See www.moxa.com/warranty

Reset Button



To reset the MGate to the factory default settings, hold down the reset button for about 5 seconds. The MGate will restart and be reset to factory default settings.

The following topics are covered in this chapter:

- ❑ **Connecting the Power**
- ❑ **Connecting PROFIBUS Devices**
- ❑ **Connecting to a Network**
- ❑ **Logging in to the Web Console**
- ❑ **Network Settings**
- ❑ **Data Transfer**
- ❑ **PROFIBUS Network**
- ❑ **Modbus TCP Configuration**
- ❑ **Configuring the MGate**
- ❑ **MXStudio**

Connecting the Power

The unit can be powered by connecting a power source to the terminal block:

1. Loosen or remove the screws on the terminal block.
2. Turn off the power source and then connect a 12–48 VDC power line to the terminal block.
3. Tighten the connections using the screws on the terminal block.
4. Turn on the power source.

Note that the unit does not have an on/off switch. It automatically turns on when it receives power. The PWR LED on the top panel will glow to indicate that the unit is receiving power. For power terminal block pin assignments, please refer to the **Power Input and Relay Output Pinout** section in Chapter 2.

Connecting PROFIBUS Devices

The unit’s PROFIBUS port(s) are located on the front panel. Use a PROFIBUS cable to directly connect the unit to the PROFIBUS devices or PROFIBUS network. Before connecting or removing the PROFIBUS connection, first make sure the power is turned off.

For the PROFIBUS port pin assignments, see the **Pin Assignments** section in Chapter 2. This information can then be used to construct the user’s own PROFIBUS cable.

Connecting to a Network

Connect one end of the Ethernet cable to the MGate’s 10/100M Ethernet port and the other end of the cable to the Ethernet network. The MGate will indicate a valid connection to the Ethernet in the following ways:

- The Ethernet LED maintains a solid green color when connected to a 100 Mbps Ethernet network.
- The Ethernet LED maintains a solid orange color when connected to a 10 Mbps Ethernet network.
- The Ethernet LED will flash when Ethernet packets are being transmitted or received.

Logging in to the Web Console

If you do not know the MGate gateway’s IP address when setting it up for the first time (default IP is *192.168.127.254*), use an Ethernet cable to connect the host PC and MGate gateway directly. If you connect the gateway and host PC through the same Ethernet switch, make sure there is no router between them. You can then use MGate Manager to detect the MGate gateways on your network. When the MGate gateway appears on the MGate Manager device list, right-click on the MGate you would like to configure to configure it with the web console.

No.	Name	Model	MAC Address	IP/COM	Status	Firmware Version
01	MG-MB3170_2872	MGate MB3170	00:90:E8:27:6D:99	192.168.32.228	Locked	Ver. 2.3 Build 14121610
02	MGate 5101_50024	MGate 5101-PBM-MN	00:90:E8:AB:00:01	192.168.32.241	Locked	Ver. 1.3 Build 14121610
03	Golden5105-2	MGate 5105-MB-EIP	00:90:E8:3E:1F:16	192.168.32.227	Locked	Ver. 1.3 Build 14121610

On the first page of the web console, enter **admin** for the default Account name and **moxa** for the default Password.

Account

Password

Network Settings

You first need to configure the MGate's network settings for communication. Be sure to configure the IP address and netmask properly. Refer to the **Network Settings** section in Chapter 4, or contact your IT department for detailed configuration instructions.

Data Transfer

Next, configure the PROFIBUS and Modbus protocols. The MGate provides the internal memory for data transfer between PROFIBUS and Modbus. Both sides will transfer the data between the interface and this internal memory, so you need to understand the structure of this internal memory first. Refer to the **Data Exchange Between Modbus TCP and PROFIBUS** section in Chapter 4 for details. You will first need to determine how much data will be transferred between PROFIBUS and Modbus devices.

PROFIBUS Network

In the PROFIBUS interface, the MGate acts as the PROFIBUS master, so you need to configure the PROFIBUS network first. Before connecting the slave devices to the MGate, all slave devices need to be properly configured (address, I/O modules, etc.). To configure the PROFIBUS slaves for the MGate, use the AutoScan function in MGate Manager PROFIBUS settings to automatically get all settings of devices that are connected to the PROFIBUS network. Refer to the **PROFIBUS Settings** section of Chapter 4 for details. You may also add an I/O module for each slave devices, and configure the proper internal memory settings manually.

To confirm that the PROFIBUS slave devices are working properly, check the LEDs on the MGate's front panel; the "PBM" LED will show a steady green light. To check that the I/O module data is exchanged correctly, use the web console's **I/O Data View** to check the MGate's internal memory. The data used by the PROFIBUS and Modbus TCP will be displayed for verification.

If any slave devices are not working properly, the "PBM" LED will flash. You can use MGate Manager's **Diagnose** function to check which slave is causing the problem. The **Log Settings** function can also be used to check communication issues. If any PROFIBUS connection is lost, the event will be recorded in the system's flash memory for future verification.

Modbus TCP Configuration

In the Modbus TCP interface, the MGate supports both master and slave configurations. Slave mode is easier to configure. You will need to confirm that the Modbus master at the remote site can send commands properly. For master mode, you need to specify the commands manually, one-by-one. Again, you need to understand the internal memory configuration properly. Refer to the **Modbus Settings** section in Chapter 4 for details.

To check that I/O module data is exchanged correctly, use the web console's **I/O Data View** to check the MGate's internal memory. MGate Manager's **Diagnose** function can be used to check if there are any problems with the Modbus TCP communication. An invalid response or timeout will be displayed in the diagnose window. To confirm that the Modbus TCP connections are working properly, use the web console to show all of the connections information. The **Log Settings** function can also be used to check communication issues.

Configuring the MGate

The MGate 5101-PBM-MN provides four ways to configure the MGate.

1. **MGate Manager (Windows utility)**

Use MGate Manager to configure the MGate through Ethernet or check the MGate status. See the **Configuration** section in Chapter 4 for details.

2. **Web console**

Use the Web console to configure the MGate through Ethernet or verify the MGate's status. Use a web browser, such as Microsoft Internet Explorer or Google Chrome, to connect to the MGate using the HTTP/HTTPS protocol. In this case, the MGate's IP address must be configured correctly. Note that the web console cannot be used to configure all parameters. Some parameters must be configured through MGate Manager. See the **Configuration** section in Chapter 5 for details.

3. **Text mode console**

Use the Telnet/SSH console to configure the MGate through Ethernet or verify the MGate's status. Use a Telnet tool, such as HyperTerminal or PuTTY, to log in to the MGate with the Telnet or SSH protocol. In this case, the MGate's IP address must be configured correctly. Note that Telnet/SSH cannot be used to configure all parameters. Some parameters must be configured through MGate Manager. See the **Configuration** section in Chapter 6 for details.

4. **Serial console**

Use the serial console to configure the MGate through an RS-232 null modem (crossover) cable or verify the MGate's status. The interface will be same as for the Telnet console. Use a serial terminal emulation tool, such as Moxa PComm Terminal Emulator or PuTTY, to log in to the MGate's serial console. Note that the serial console cannot be used to configure all parameters. Some parameters must be configured through MGate Manager. The RS-232 serial console port is located on the unit's front panel. See the **Configuration** section in Chapter 6 for details.

MXStudio

Moxa MXStudio is a network management suite that includes MXview, MXconfig, and N-Snap. MXstudio network management software gives you a convenient graphical representation of your Ethernet network, and allows you to configure, monitor, and diagnose Moxa networking devices. MXview provides an integrated management platform that can manage Moxa's MGate 5000 Series as well as Ethernet switches and wireless APs, and SNMP-enabled and ICMP-enabled devices installed on subnets. MXview includes an integrated MIB compiler that supports any third-party MIB. It also allows you to monitor third-party OIDs and Traps. Network and Trap components that have been located by MXview can be managed via web browsers from both local and remote sites—anytime, anywhere. For more detailed information regarding MXview, download the MXview user's manual from Moxa's website at <http://www.moxa.com>.

Configuration (MGate Manager)

The following topics are covered in this chapter:

- ❑ **Installing the Software**
- ❑ **Starting MGate Manager**
- ❑ **Connecting to the Unit**
- ❑ **Modifying the Configuration**
- ❑ **Password Protection**
 - Configure Device
 - Network Settings
 - PROFIBUS Settings
 - Modbus Settings
 - Data Exchange Between Modbus TCP and PROFIBUS
 - System Settings
- ❑ **Load Default**
- ❑ **Monitoring Modbus Activity**
- ❑ **Diagnose**
- ❑ **Create/Modify the Configuration File**
- ❑ **Upgrading the Firmware**
- ❑ **Import/Export**

Installing the Software

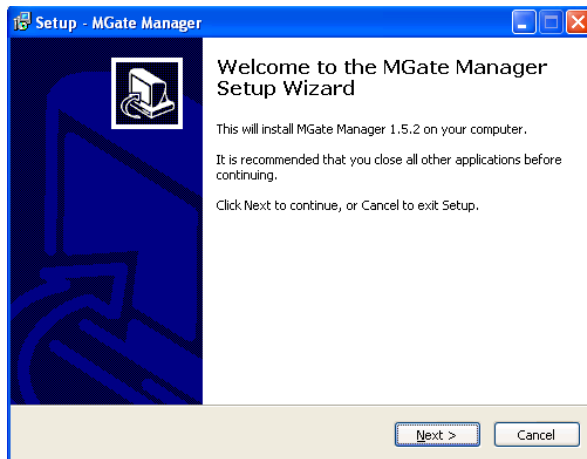
The following instructions explain how to install MGate Manager, a utility for configuring and monitoring MGate 5101-PBM-MN units over the network.

1. Insert the Document and Software CD into the CD-ROM drive. Locate and run the following setup program to begin the installation process:

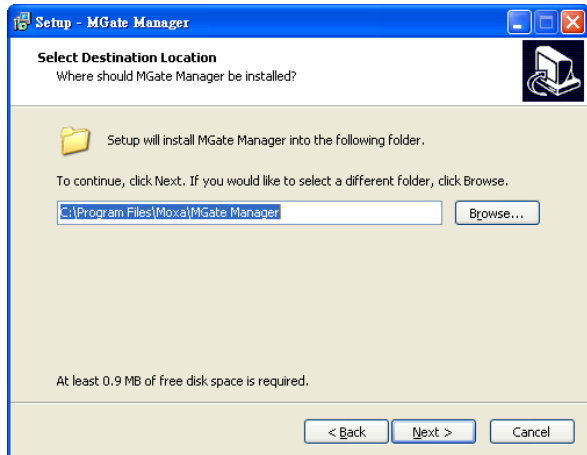
MGM_Setup_[Version]_Build_[DateTime].exe

An example might be named MGM_Setup_Verx.x_Build_xxxxxxxx.exe.

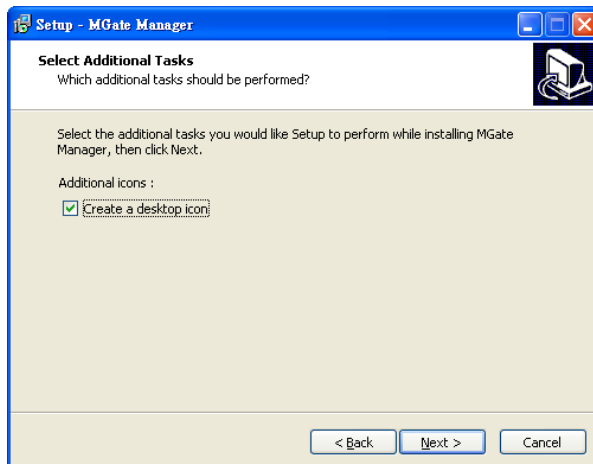
2. You will be greeted by the Welcome window. Click **Next** to continue.



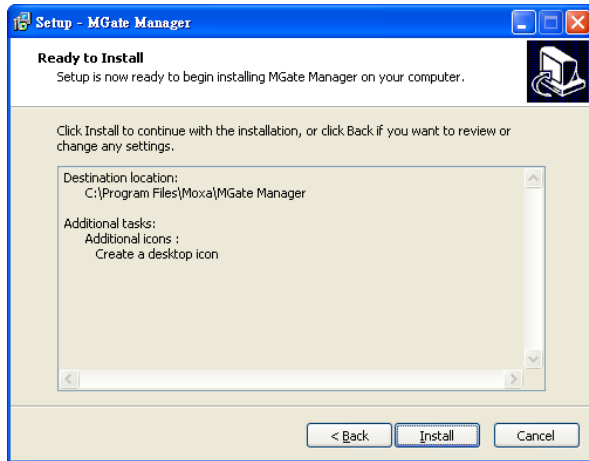
3. When the **Select Destination Location** window appears, click **Next** to continue. You may change the destination directory by first clicking on **Browse**.



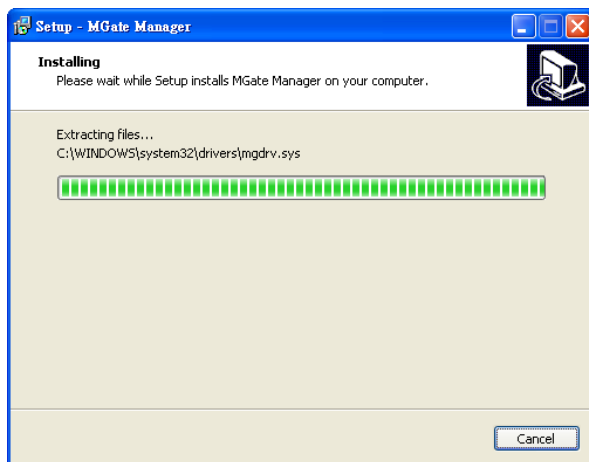
4. When the **Select Additional Tasks** window appears, click **Next** to continue. You may select **Create a desktop icon** if you would like a shortcut to MGate Manager on your desktop.



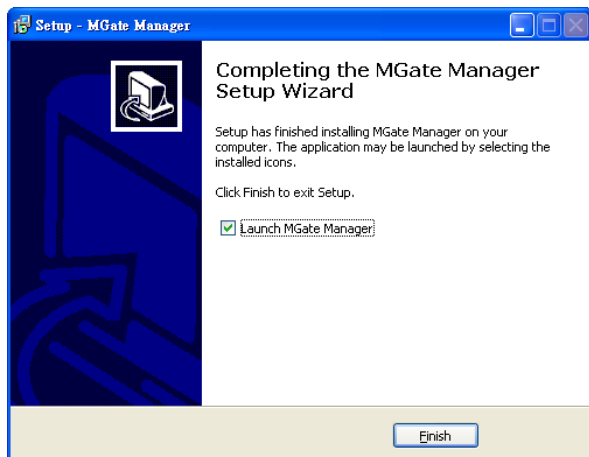
5. Click **Next** to start copying the software files.



6. A progress bar will appear. The procedure should take only a few seconds to complete.



7. A message will indicate that MGate Manager is successfully installed. You may choose to run it immediately by selecting **Launch MGate Manager**.



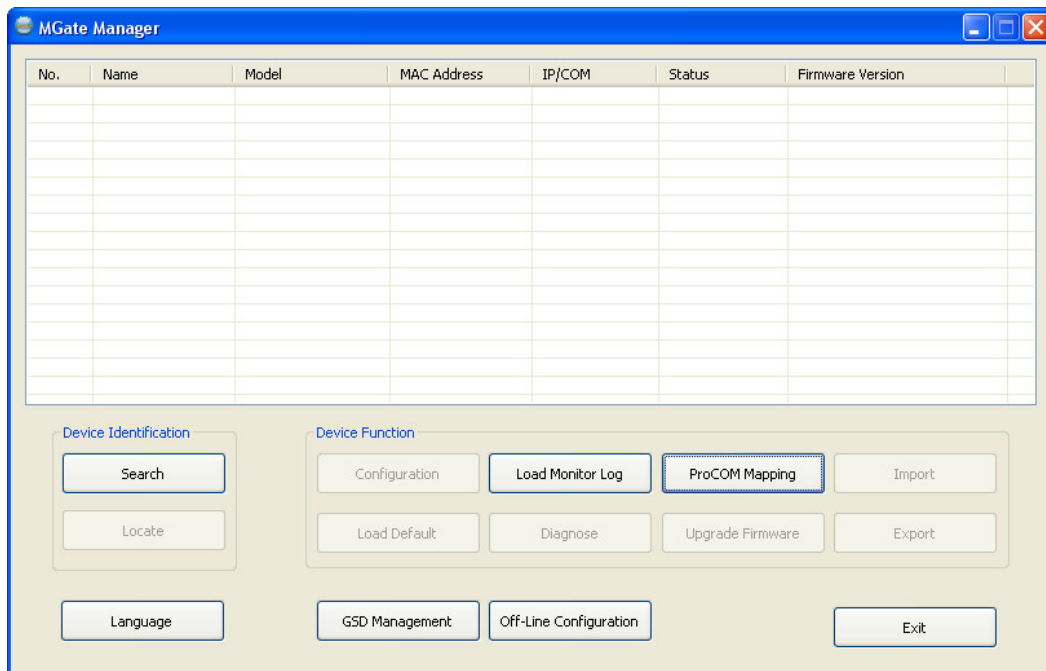
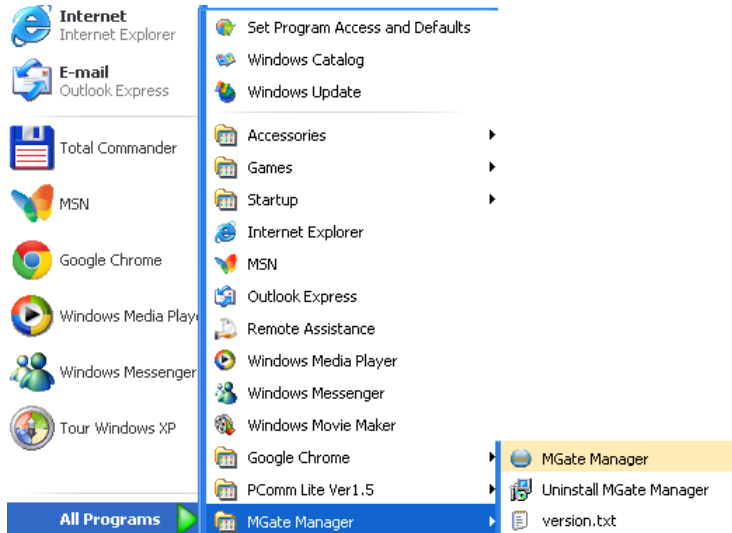
8. You may also open MGate Manager through **Start → Programs → MGate Manager → MGate Manager**, as shown in the next section below.

Starting MGate Manager

MGate Manager is a Windows-based utility that is used to configure the MGate 5101-PBM-MN.

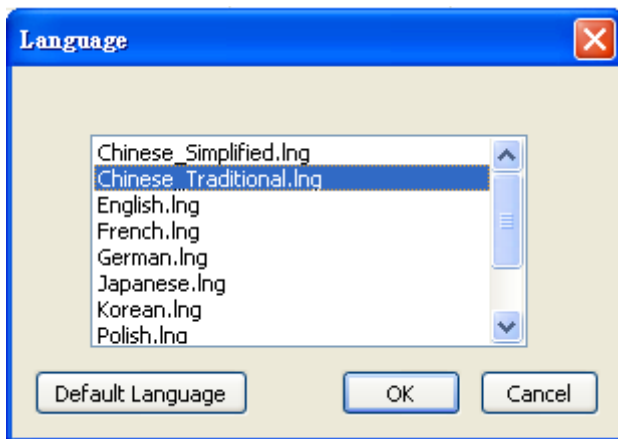
Before running MGate Manager, make sure that the MGate 5101-PBM-MN is connected to your PC. See Chapter 2 for details.

You may open MGate Manager from the Windows Start menu by clicking **Start → Programs → MGate Manager → MGate Manager**. The MGate Manager window should appear as shown below.



Changing the Language Setting

If you want to run MGate Manager in a different language, click **Language** to change the language setting. A dialog box showing the available languages should appear as shown below.



When you click **OK**, MGate Manager will immediately reflect your chosen language.



After changing to a different language, you will find that all strings on MGate Manager are replaced in your chosen language. For example, the above picture is shown in traditional Chinese. Note regardless of which language you choose, the label on the language button won't change.



ATTENTION

Set your MGate Manager to **Default Language** before contacting Moxa Technical Support.

With support for multiple languages, MGate Manager is more user-friendly and accessible. However, if you need assistance from Moxa Technical Support, please change the language to "Default Language". This will prevent any misunderstandings or confusion about MGate Manager menu items and commands as our engineers assist you.

The default language is English and will only be active for the current MGate Manager session. When you open MGate Manager again, the language will revert to your original setting.

Connecting to the Unit

Prior to configuration, MGate Manager must be connected to its unit. There are two methods for establishing a connection. **Broadcast Search** locates the MGate Series on the LAN. **Search by IP** attempts to connect to a specific unit by IP address, which is useful if the unit is located outside the LAN or can only be accessed by going through a router.

Broadcast Search

Broadcast Search is used for MGate Ethernet Gateways, such as the MGate 5101/MB3000/EIP3000 Series, which are discovered via Ethernet by using broadcast IP.

Specify by IP Address

Specify by IP Address is used for MGate Ethernet Gateways, such as the MGate 5101/MB3000/EIP300 Series, which are discovered via Ethernet by using a specific IP address. Click **Specify by IP Address** if you know the IP address of the unit and wish to connect to it directly.



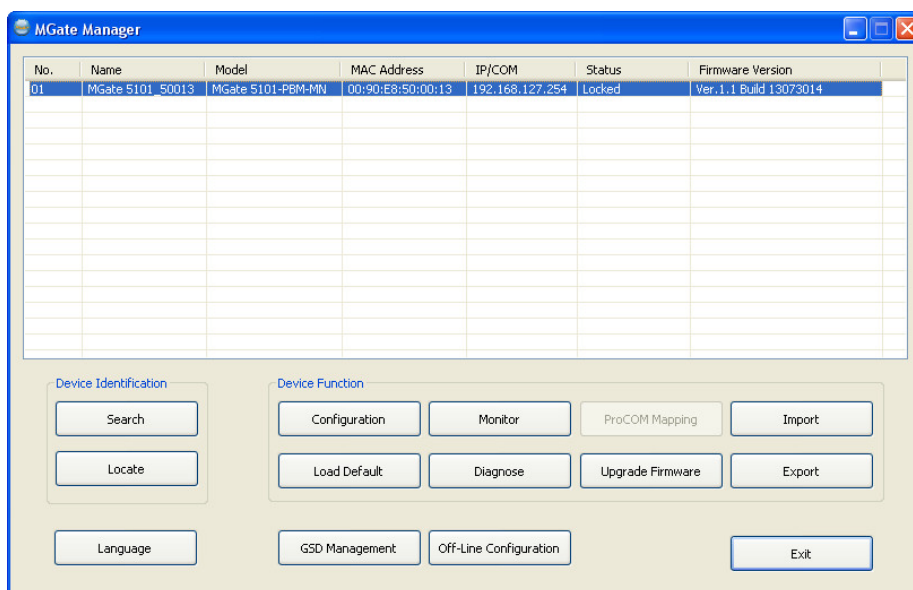
ATTENTION

If **Search by IP Address** fails to locate the MGate 5101/MB3000/EIP3000 Series, the IP address that you entered might be incorrect. Try doing the search again and re-entering the IP address carefully.

Another possibility is that the MGate 5101/MB3000/EIP300 Series is located on the same LAN as your PC, but on a different subnet. In this case, you can modify your PC's IP address and or netmask so that it is on the same subnet as the MGate 5101/MB3000/EIP300 Series. After your PC and the MGate 5101/MB3000/EIP300 Series are on the same subnet, MGate Manager should be able to find the unit.

Modifying the Configuration

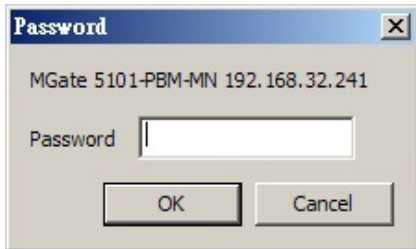
Once your unit is displayed in MGate Manager, select it by clicking on it. The **Configuration** button will become available. Click **Configuration** to open the configuration window.



Password Protection

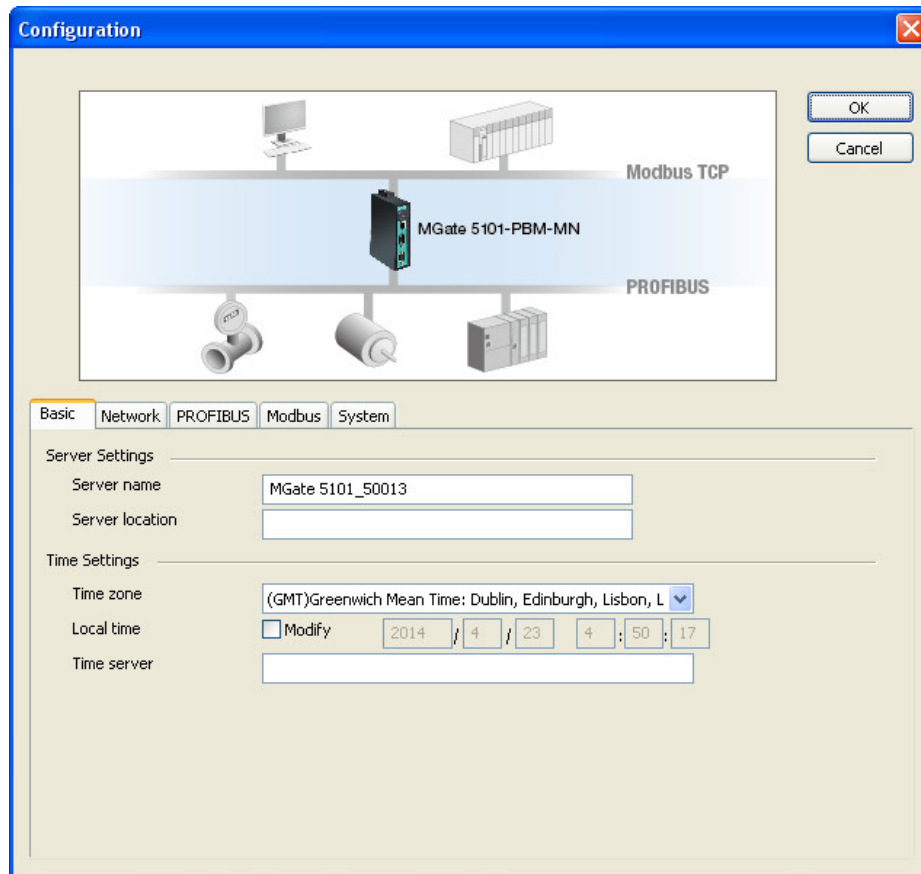
For safety reasons, account/password protection is enabled by default, so you must provide the correct password to unlock the device before configuring the device.

The default password is **moxa** (all lowercase).



Configure Device

On the first page, you can change device name and select a password to protect the unit from unauthorized access.



Server Settings

Parameter	Value	Notes
Server Name	(an alphanumeric string)	You can enter a name to help you identify the unit, such as the function, etc.
Location	(an alphanumeric string)	You can enter a name to help you identify the unit location, such as "Cabinet A001".

Time Settings

The MGate 5101-PBM-MN has a built-in Real-Time Clock for time calibration functions. Functions such as log function can add real-time information to the message.



ATTENTION

First time users should select the time zone first. The Console will display the “real time” according to the time zone compared to GMT. If you would like to modify the real time clock, select “Local time.” MGate’s firmware will modify the GMT time according to the Time Zone.

Parameter	Value	Notes
Time Zone	User selectable time zone	This field shows the currently selected time zone and allows you to select a different time zone.
Local Time	User adjustable time. (1900/1/1-2037/12/31)	
Time Server	IP or Domain address (E.g., 192.168.1.1 or time.stdtime.gov.tw)	This optional field specifies your time server’s IP address or domain name, if a time server is used on your network. The module supports SNTP (RFC-1769) for automatic time calibration. The MGate will request time information from the specified time server every 10 minutes.

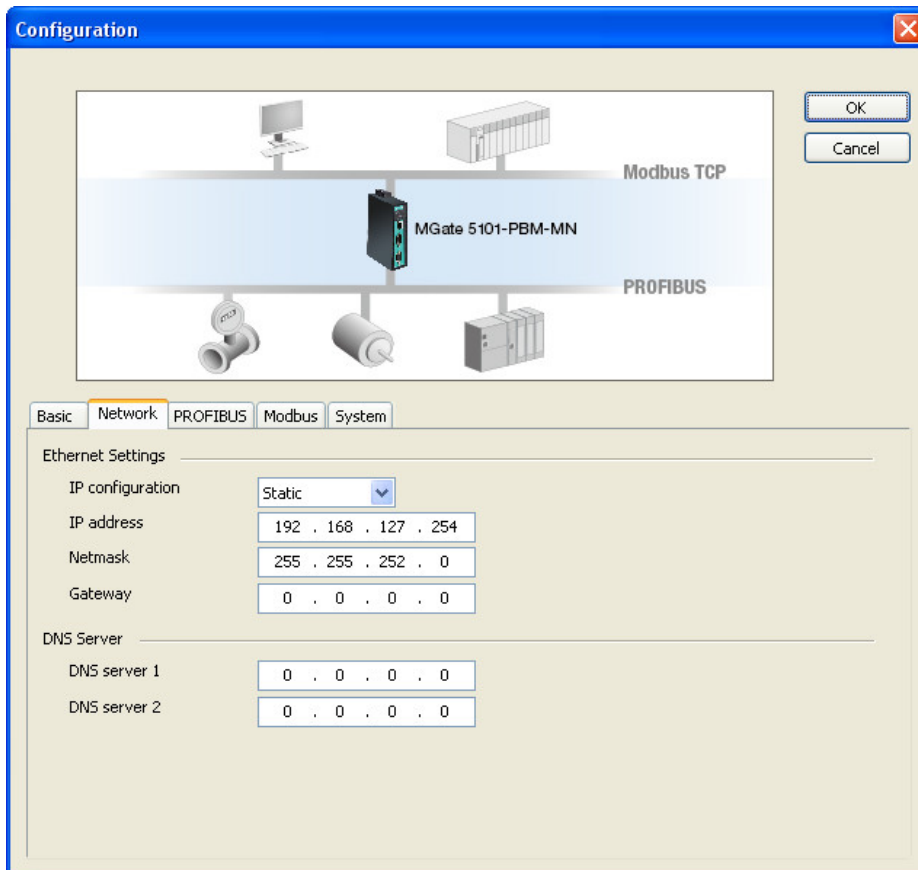


ATTENTION

When modifying the local time, select the time zone first. The time display will be updated to reflect the specified time zone.

Network Settings

The **Network** tab is where the unit’s network settings are configured. You can modify the **IP Configuration**, **IP Address**, **Netmask**, **Default Gateway**, and **DNS**.



Ethernet Settings

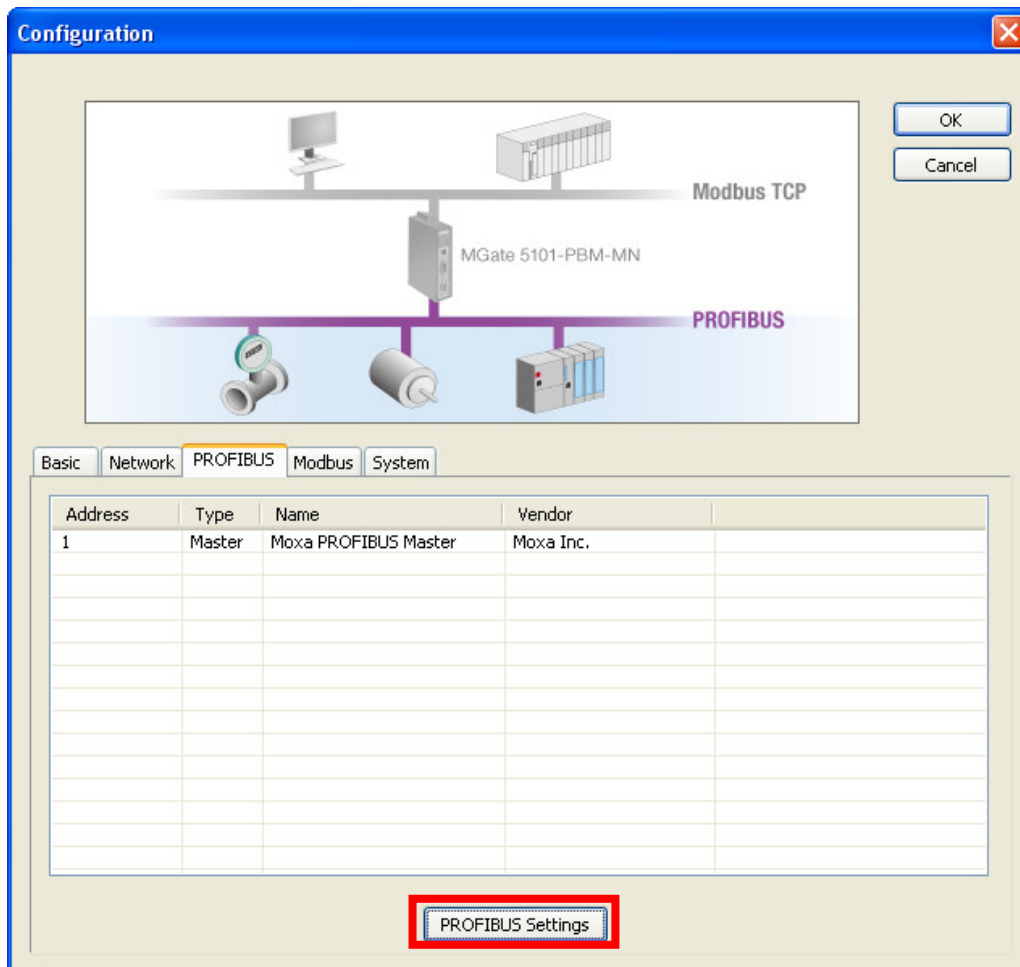
Parameter	Value	Notes
IP Configuration	Static IP, DHCP, BOOTP	Select "Static IP" if you are using a fixed IP address. Select one of the other options if the IP address is set dynamically.
IP Address	192.168.127.254 (or other 32-bit number)	The IP (Internet Protocol) address identifies the server on the TCP/IP network.
Netmask	255.255.255.0 (or other 32-bit number)	The netmask identifies the server as belonging to a Class A, B, or C network.
Gateway	0.0.0.0 (or other 32-bit number)	The gateway is the IP address of the router that provides network access outside the server's LAN.

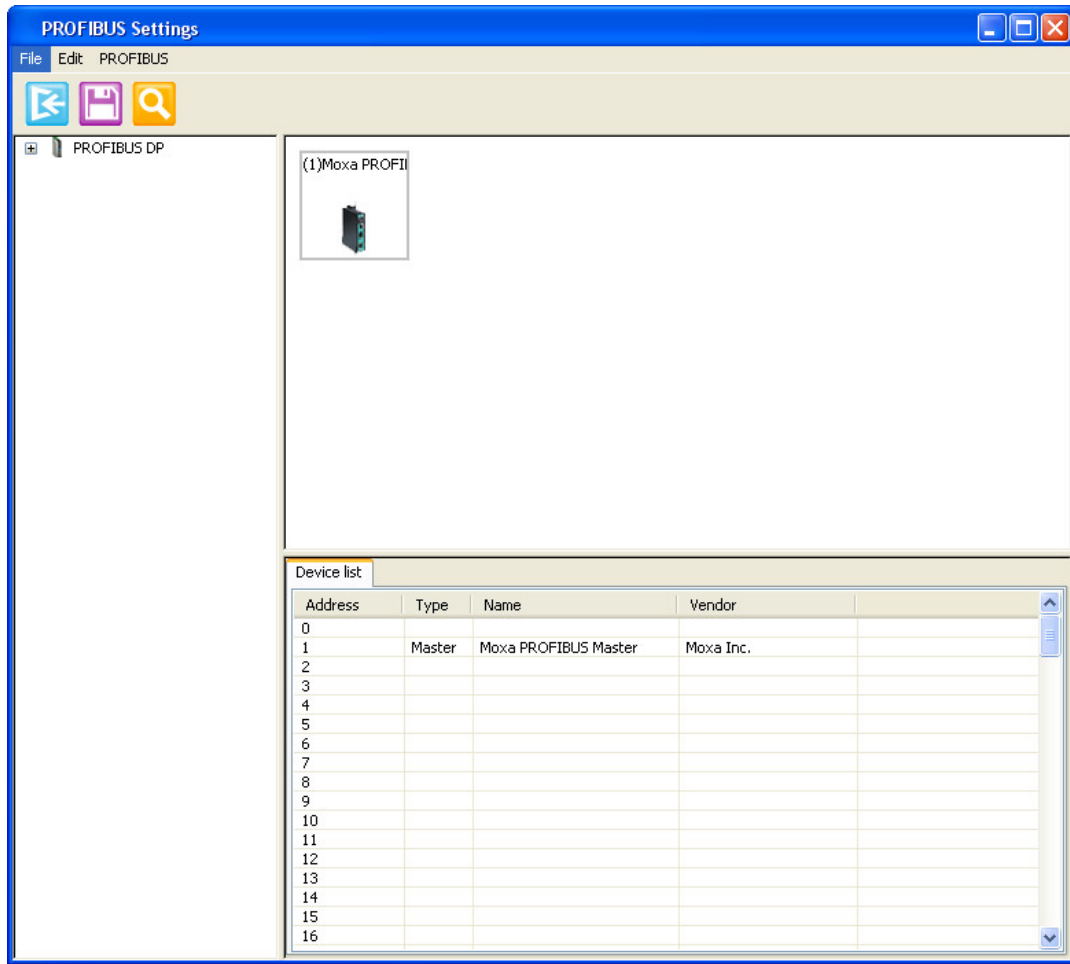
DNS Server

Parameter	Value	Notes
DNS Server 1	0.0.0.0 (or other 32-bit number)	This is the IP address of the primary domain name server.
DNS Server 2	0.0.0.0 (or other 32-bit number)	This is the IP address of the secondary domain name server.

PROFIBUS Settings

The MGate 5101-PBM-MN PROFIBUS interface supports DPV1 master protocol and is compliant with IEC 61158. Before the MGate can communicate with PROFIBUS slave devices, you need to input the PROFIBUS parameters for all connected devices, such as slave address and I/O module. To configure the slave devices, click the **PROFIBUS Settings** button. The new configuration window for the PROFIBUS network will open.





The **PROFIBUS Settings** window is divided into three sections.

Left panel: Shows a tree list for recognized devices that the GSD file has already imported into the host computer through MGate Manager. If the target PROFIBUS slave devices that you want to connect to this MGate are not in the list, import the GSD file first.

Right top panel: Shows the PROFIBUS network controlled by this MGate. To begin with, there is only one device, the PROFIBUS master device, which is also the MGate the user is configuring. To add new devices to this network, drag the device from the left panel into this panel. For this device to work correctly, you need to configure this device's PROFIBUS parameters, including slave address and baud rate.

Right bottom panel: Shows the "device lists" or "the I/O module list of the selected slave device in the top panel".

Adding new PROFIBUS slave devices to the PROFIBUS network

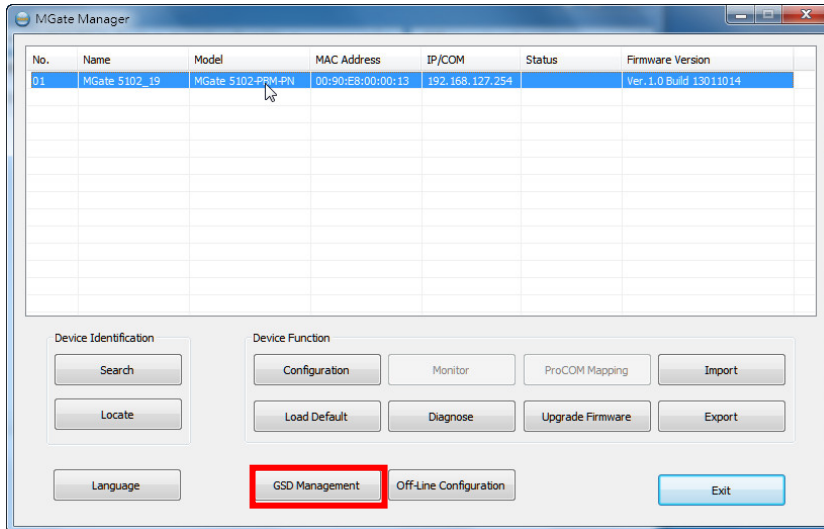
Take the following steps to add a new PROFIBUS slave device to the PROFIBUS network. Detailed instructions for each step are given below.

1. Add new GSD files for different PROFIBUS slave devices with the GSD management function. If several devices use the same GSD file, you only need to run this process once. This means that if the GSD file is already in the GSD Management window list, you can skip this step.
2. Load the PROFIBUS Settings window.
3. Add a new device to the PROFIBUS network.
4. Configure the PROFIBUS address.
5. Configure the I/O module for the target PROFIBUS slave device that you want to access.
6. Run steps 3 to 5 for each PROFIBUS slave device.
7. Save the configuration and exit the PROFIBUS Settings function.

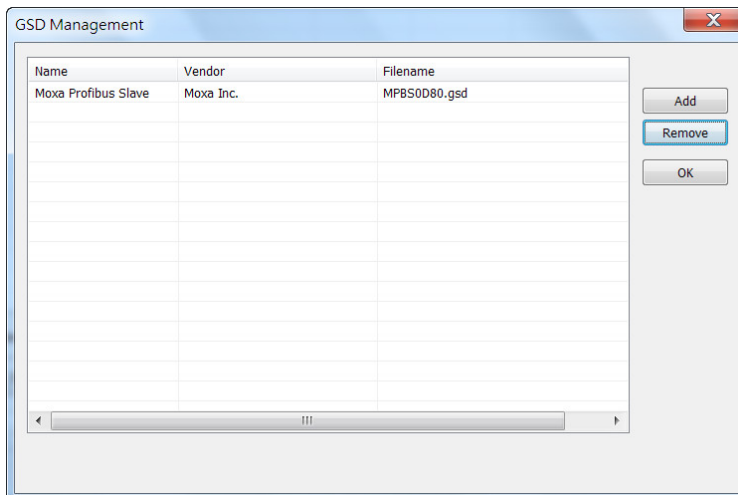
Step 1: Add a new GSD file (if necessary)

A GSD file is a standard device description file for a PROFIBUS device. It includes all important device information and is provided by the device’s manufacturer. If you want to configure a PROFIBUS device for a PROFIBUS network, import the GSD file into the PROFIBUS network configuration software. If several devices use the same GSD file, you only need to import it once. This means that if the GSD file is already in the GSD Management window list, you can skip this step. MGate Manager provides a function, **GSD Management**, to manage GSD files.

To launch the GSD Management interface, click the **GSD Management** button from MGate Manager’s main window.

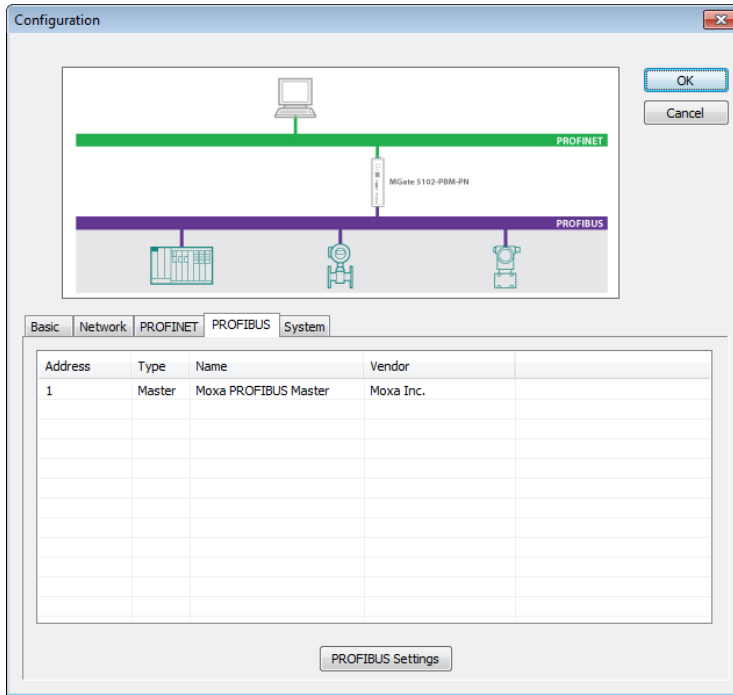


To add a GSD file, click **Add** and then assign the path where the GSD file is located. To delete a GSD file, select the GSD file and then click **Remove**.



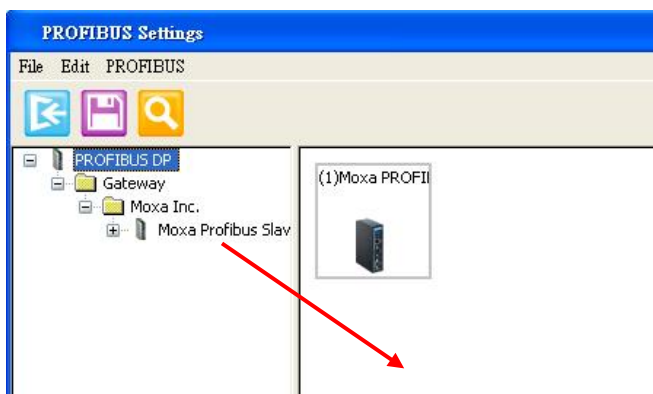
Step 2: Load the PROFIBUS Settings window

To further configure the PROFIBUS, click the **PROFIBUS Settings** button. The new configuration window for the PROFIBUS network will pop up.

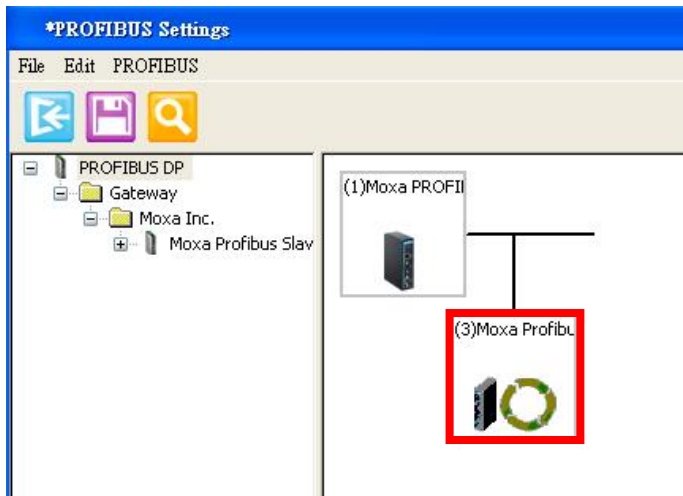


Step3: Add a new device to the PROFIBUS network

If you have already added the GSD file of the PROFIBUS device into MGate Manager correctly, you will see the devices listed in the left panel tree. The icon in the right panel shows the current connection status of the MGate device. Initially, only one device, the MGate 5102-PBM-PN PROFIBUS master, will be shown.



To add the device to the PROFIBUS network shown in the right panel above, drag the device from the left panel and drop it into the right panel. The device will then be shown beneath the network icon depicted in the right panel.

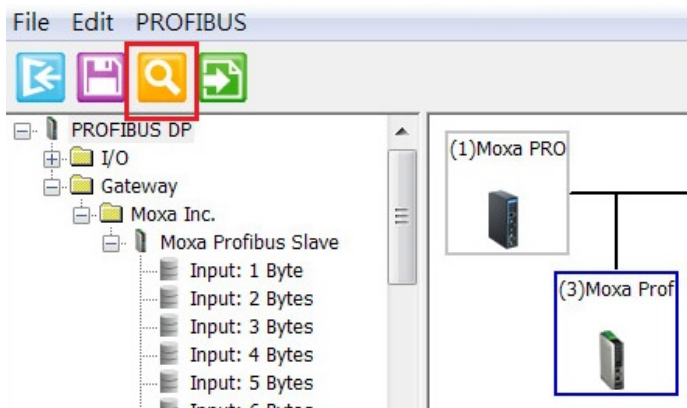


To remove the device from the PROFIBUS network (depicted at the top of the right panel in the figure above), select the device and press the **Delete** key.

AutoScan Function

The MGate Manager Utility also provides a PROFIBUS automatic scanning function so that the MGate device can automatically gather information about the PROFUBUS slaves that are connected to the network. When the scan is complete, you can change the detected slave devices to the bus configurations and download them to the Master.

Click the **AutoScan** button; the MGate device will display all the devices on the PROFIBUS network with configured I/O modules in a new window. You can click the top checkbox to select all, or select specific checkboxes for each signal device. When you click the **OK** button, the selected device and related I/O modules will be added to the PROFIBUS network configuration. This function eliminates the need to add slave devices manually one by one.

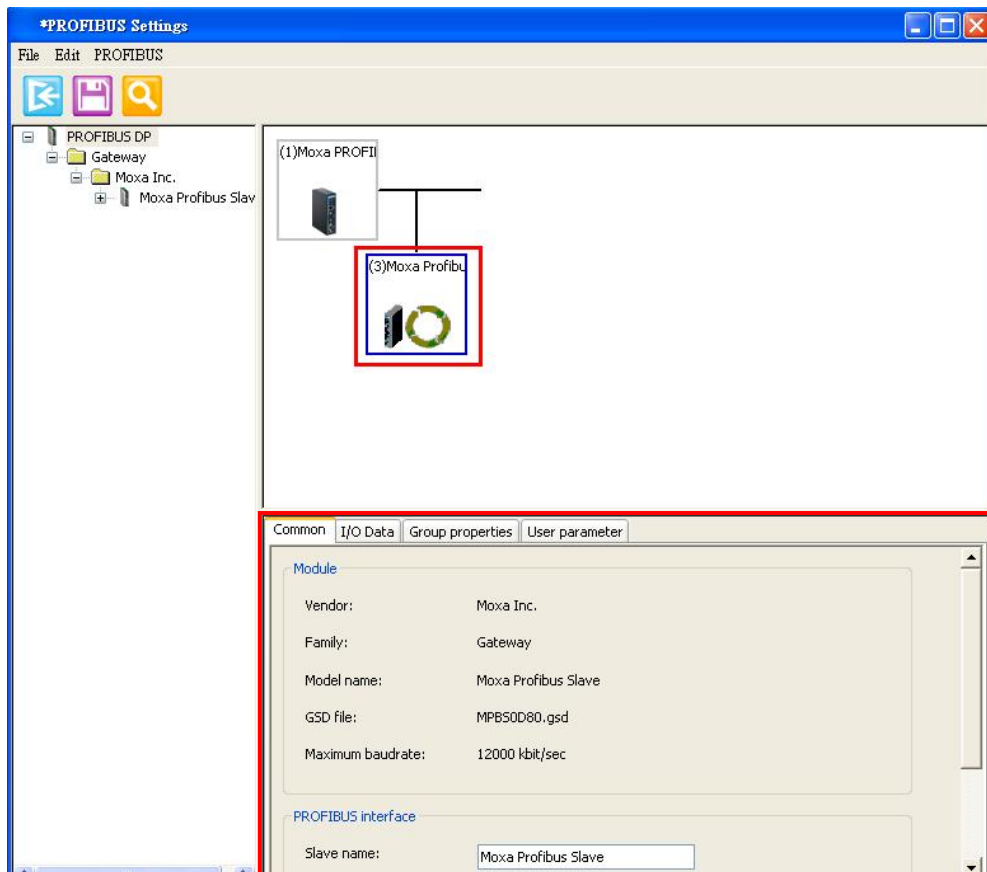
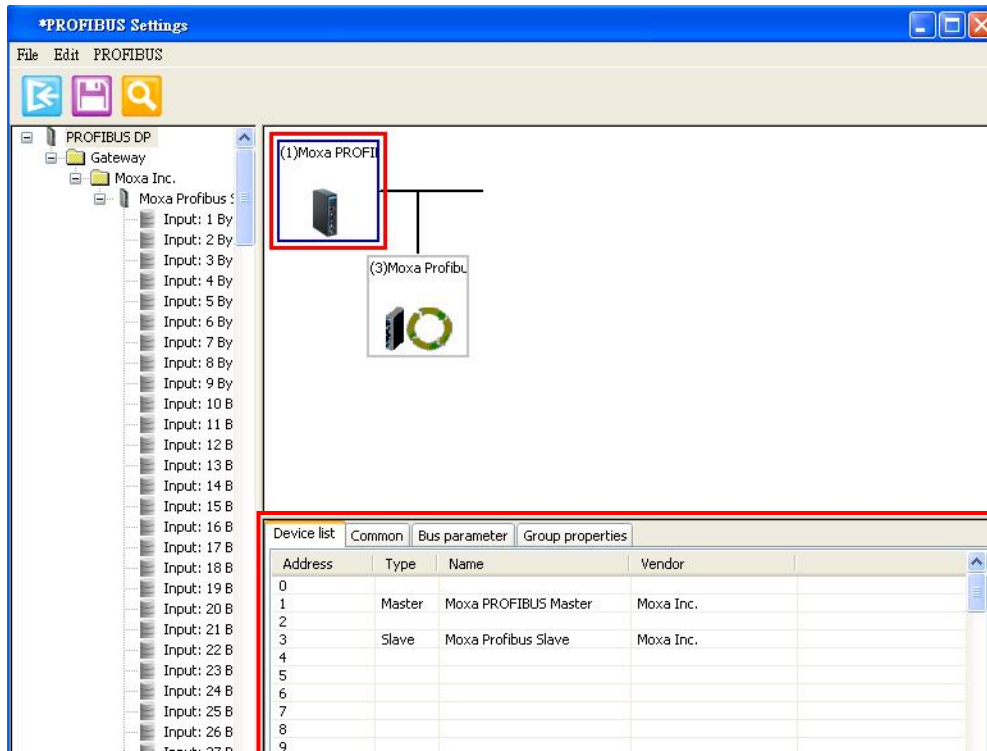


<input type="checkbox"/> Device status	Addr...	Iden...	Model name	Vendor	Module	GSD file
<input type="checkbox"/> Master in bus configuration	1	0x0DF3	Moxa PROFIBU...	Moxa Inc.	-	MPBMODF3.gsd
<input type="checkbox"/> Slave not in bus configuration	2	0x0D80	Moxa Profibus ...	Moxa Inc.	Input: 64 Words Output: 64 Words Input: 32 Words Output: 32 Words	MPBS0D80.gsd
<input type="checkbox"/>						
<input type="checkbox"/>						

If you use the **AutoScan** function, you can skip Step 3 to Step 6, and go directly to Step 7.

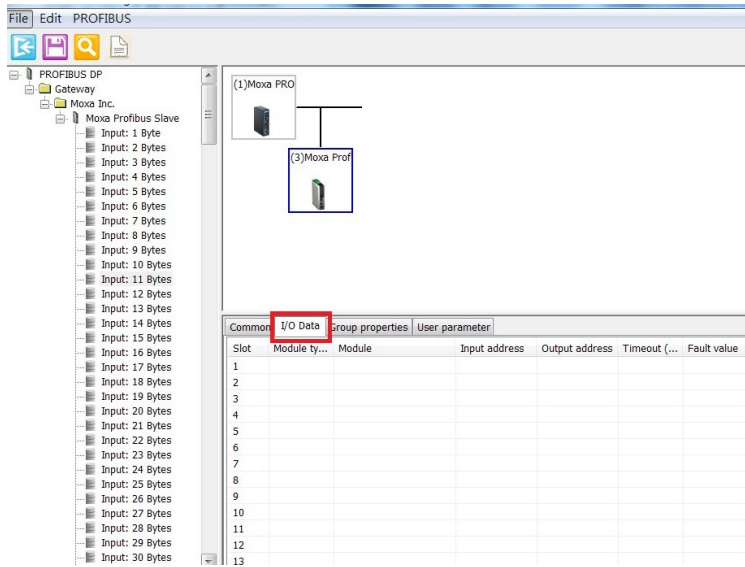
Step 4: Configure the PROFIBUS device address and other parameters if necessary.

Selecting a device will show its parameter configuration window in the bottom panel. In the configuration window, you can select different tabs to configure the detailed parameters for each device, including the PROFIBUS master.

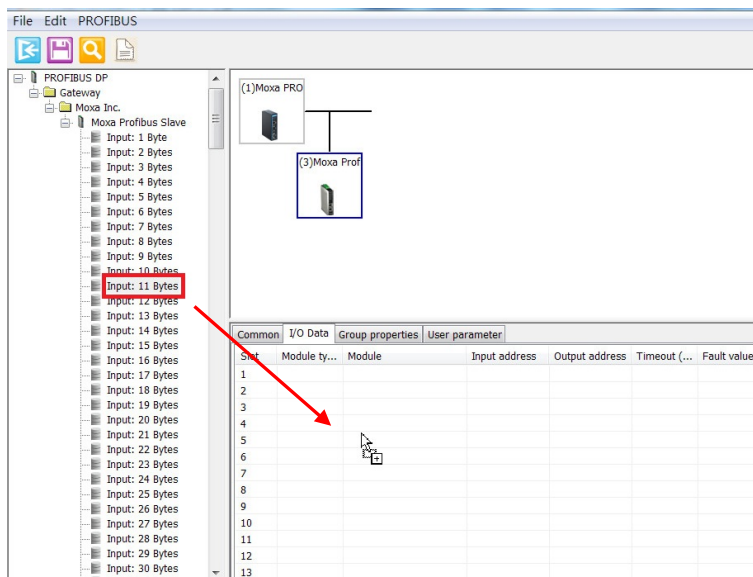


Step 5: Configure the I/O module for the specific PROFIBUS slave device you want to access.

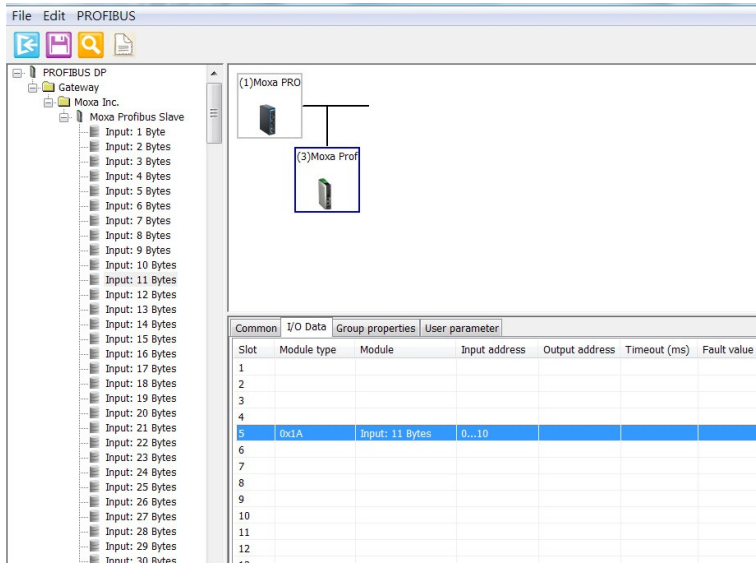
To configure the PROFIBUS I/O modules for a specific slave device, select the device from the top of the right panel and click the **I/O Data** tab in the bottom panel.



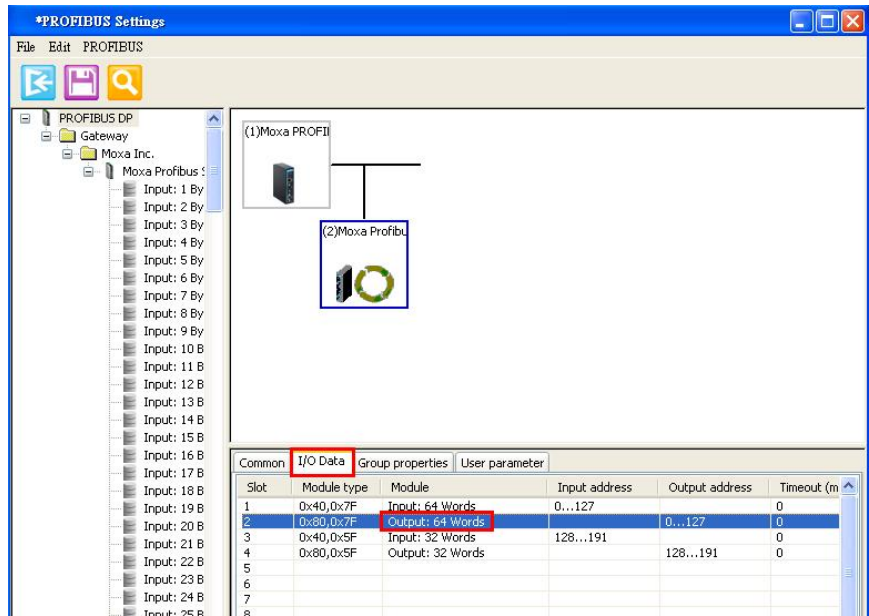
Drag the proper I/O module from the left panel to the right panel to complete the configuration.



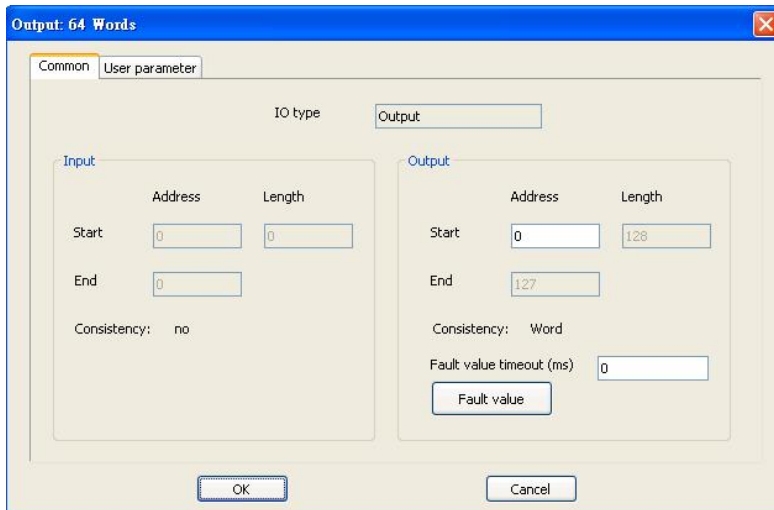
The added I/O device will appear in the lower portion of the right panel.



At this point, you can configure device parameters, including the slave address and I/O modules. To configure each I/O module in detail, double click the I/O module to display the configuration dialog. In the dialog box, configure the internal memory address Offset and Fault values. To configure these parameters, refer to the Data Exchange Between PROFINET and PROFIBUS and Fault Value Configuration in the PROFIBUS Output Module sections.



To remove the I/O modules, select the I/O module and press the Delete key.

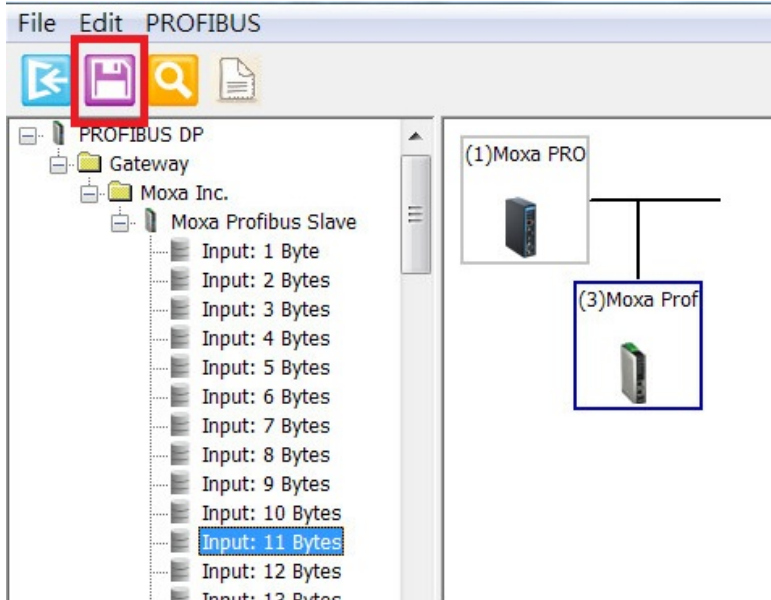


Step 6: Run steps 3 to 5 for each PROFIBUS slave device.

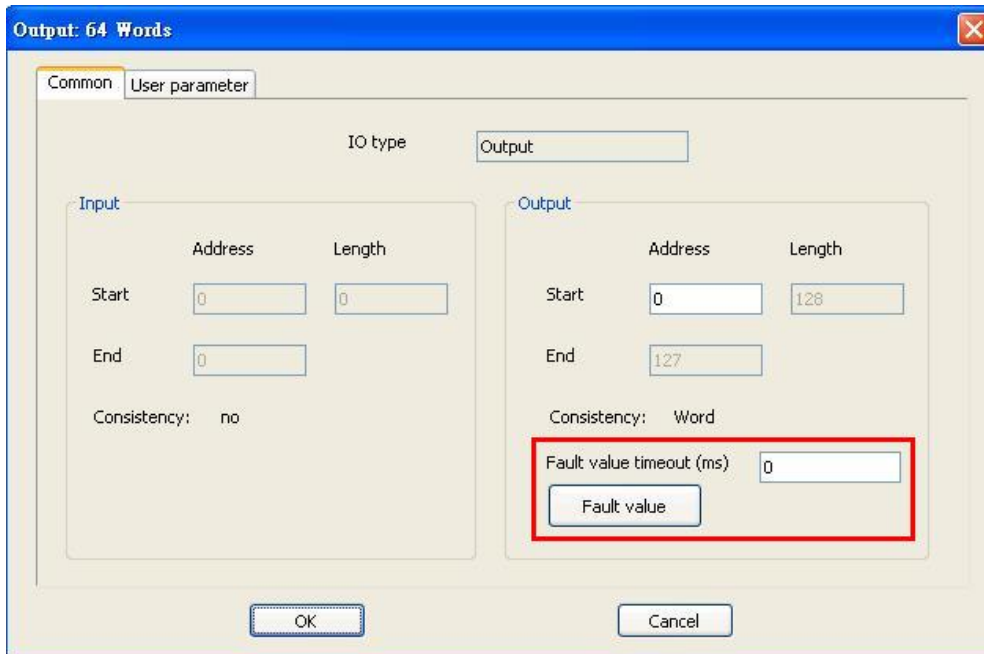
Note that you must avoid PROFIBUS address conflicts.

Step 7: Save the configuration and exit the PROFIBUS Settings function.

To save the PROFIBUS network configurations, click the **Save** button on the toolbar so that all settings will be stored in the MGate device. The MGate device will save the new settings and reboot to activate the settings.



Fault Value Configuration in a PROFIBUS output module



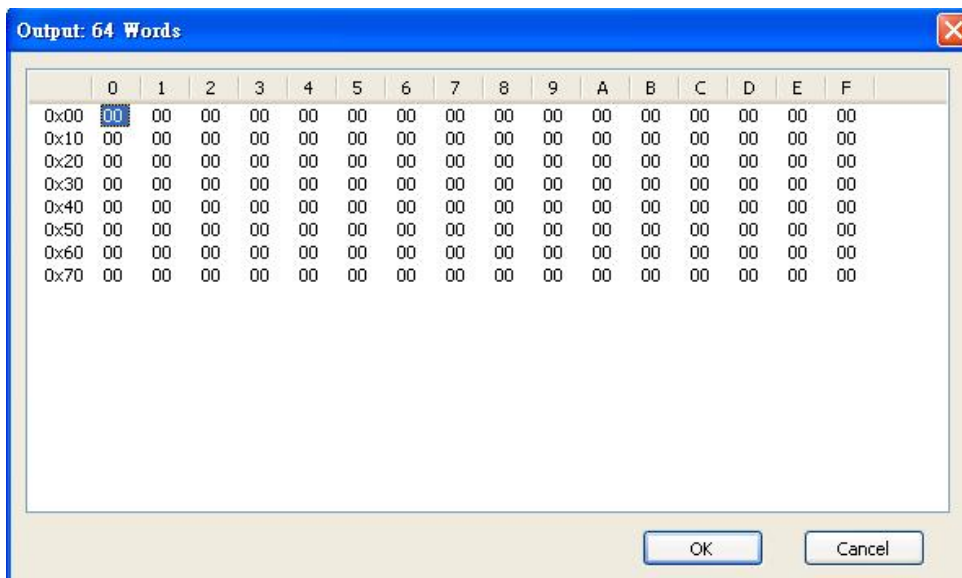
For some applications, you may want to define how to deal with the PROFIBUS output when the Modbus TCP side is not working properly. This is defined as the "Fault value". The MGate provides a setting for each PROFIBUS I/O module to handle this kind of situation.

Specify the fault value for each byte. The trigger point depends on the timeout. Each I/O module is linked to an internal memory block and should be updated by Modbus TCP periodically. If this block is not updated/accessed within the defined timeout period by any Modbus TCP command, the MGate will set the PROFIBUS output with the "Fault value" setting, or do nothing if the timeout is set to zero.

To configure the Fault Value, double click the I/O module. The I/O module configuration dialog will be displayed and the Fault Value configuration is in output module configuration.

Fault value timeout: 0, 100 to 60000 (ms). If the specific internal memory is not updated within this timeout, the MGate will set the PROFIBUS value with the "Fault value" setting. If this timeout value is zero or not between 100 and 60000, the setting will be ignored and the MGate will not monitor this memory block.

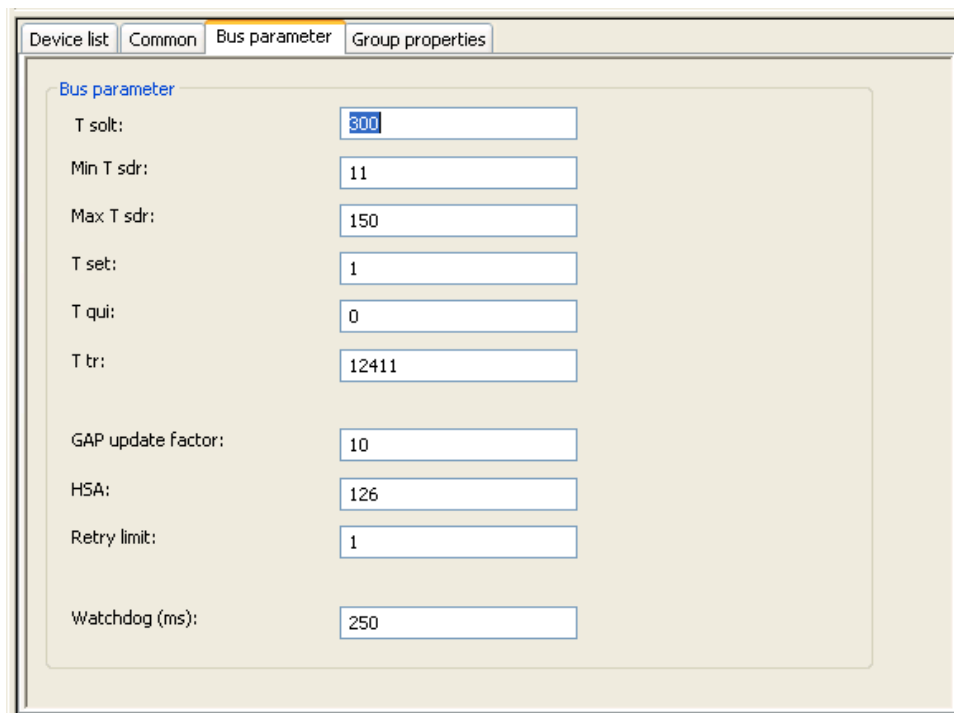
Fault value: The PROFIBUS output will be set to this value when the specific internal memory is not updated within the specific time (defined in the following timeout value). The MGate will monitor all Modbus activities to see which internal memory is accessed. Even though some memory keeps the same value, the MGate will reset the timeout if any access to this memory is blocked. Any access means Modbus TCP is working properly.



Note: If you want the PROFIBUS output to retain the last value when Modbus TCP has a problem, set this timeout value to zero.

PROFIBUS Parameters

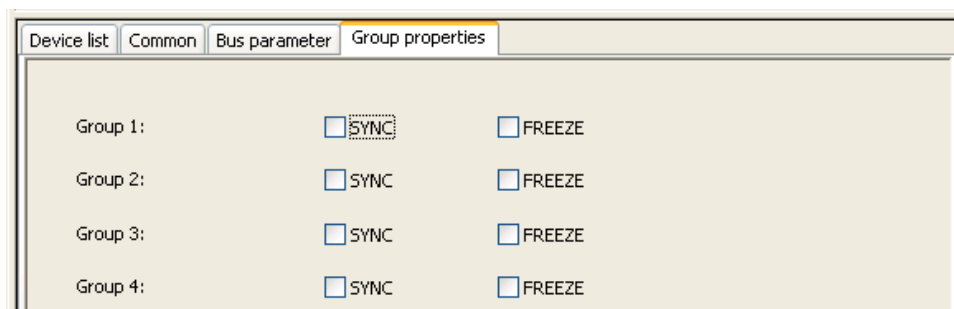
The PROFIBUS interface has several parameters that can be configured manually. These parameters are shown below on the configuration page.



Timing settings

Parameter	Value	Notes
T Slot	The unit is 100 μs.	The maximum time that the PROFIBUS master must wait for a slave response.
Min T SDR	The unit is bits time, ranging from 11 to 255.	The minimum delay time for the PROFIBUS slave device to reply to the master’s request.
Max T SDR	The unit is bits time, ranging from 11 to 255.	The maximum delay time for the PROFIBUS slave device to reply to the master’s request.
T set		Setup time. The time between an event and reply message.
T qui		Quiet Time. The time a slave device must wait after the end of a frame before enabling its receiver.
T tr		Target rotation time. The anticipated time for one token rotation on this PROFIBUS System, including allowances for high and low priority transactions, errors, and GAP maintenance.
GAP update factor		The number of token rounds between GAP maintenance (update) cycles.
HSA		Highest Station Address (FDL Address)
Retry limit		The maximum PROFIBUS retry count.
Watchdog (ms)		The watchdog time will be transferred to the slave in the Set Parameter stage. The watchdog control mechanism in a DP-Slave takes care of that; if the master fails, the output is changed to safe state after the watchdog time expires.

SYNC and FREEZE Settings



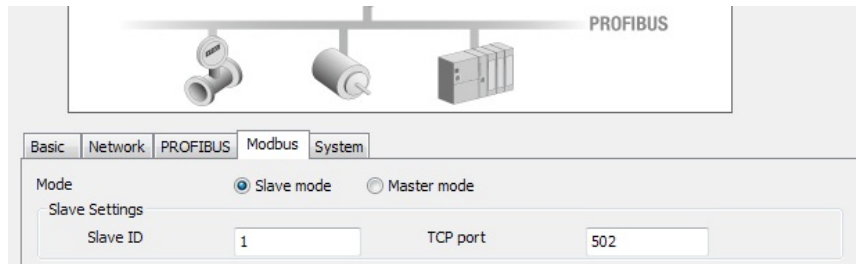
SYNC: In data_exchange the previous output value will be transferred. The following output data will be stored and not be transferred until next SYNC command or UNSYNC command.

FREEZE: In data_exchange the last input value will be transferred. The following input data value will be stored into special buffer and will not be transferred.

Modbus Settings

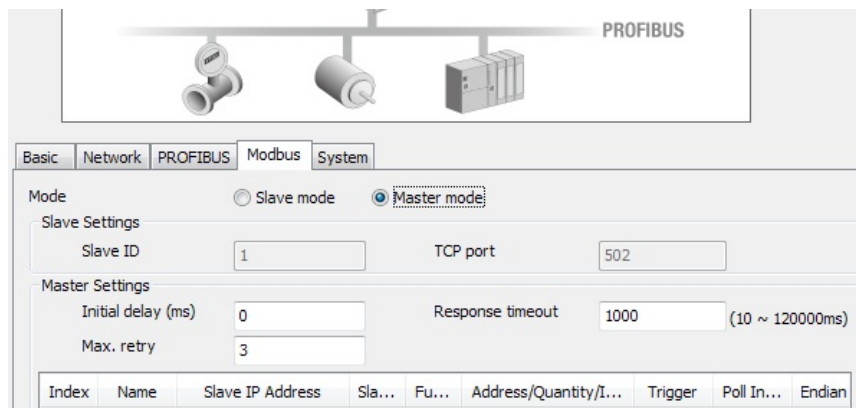
The MGate 5101-PBM-MN supports Modbus TCP’s slave and master modes. For slave mode, the MGate works as a server and waits for incoming connections from the Modbus TCP master. For master mode, the MGate works as a client and tries to establish a TCP connection with remote Modbus TCP devices. In this mode, you need to specify the IP address of the remote device and the relative Modbus command.

Slave Mode Settings



Parameters	Value	Description
Slave ID	1 to 255	The Modbus address of this MGate.
TCP Port	0 to 65535	The local TCP port for this MGate.

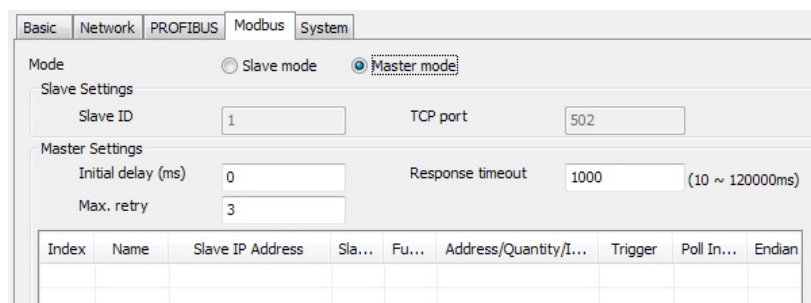
Master Mode Settings



Parameters	Value	Description
Initial Delay	0 to 65535 ms	Some Modbus slaves may take more time to boot up than other devices. For certain environments, this may cause the entire system to suffer from repeated exceptions during the initial boot-up. You can force the MGate to wait after booting up before sending the first request with the "Initial Delay" setting.
Response Timeout	10 to 12000 ms	This is used to configure how long the MGate will wait for a response from a Modbus slave.
Max. retry	0 to 99	This is used to configure how many times the MGate will try to communicate with the Modbus slave.

Modbus Command Table

To communicate with remote Modbus TCP slave devices, you need to specify the Modbus command for each device. For each Modbus read/write command, you also need to specify the internal memory address for data exchange. For a read command, the information



received from a remote device will be updated into the specified internal memory address. For a write command, the data in the specified internal memory address will be sent to the remote device. The data will be used to update the remote device's register.

Each remote device may need more than one command to communicate, so you will need to input all of the commands manually.

When you click the **Add** or **Modify** button, the following configuration dialog will be displayed.

Parameters	Value	Description
Name		Enter a name to help identify the command, such as the location, function, etc.
Slave IP address	IP address.	The IP address of the remote slave device
Port	0 to 65535	The TCP port number of the remote slave device.
Slave ID	0 to 255	The Modbus slave id that this slave module will accept. 0: Broadcasting 1 to 255: Device specific
Function	01,02,03,04,05,06,15,16, 23	When a message is sent from a Master to a Slave device the function code field tells the Slave what kind of action to perform. MGate supports the following function codes: 01: Read coils 02: Read discrete inputs 03: Read holding registers 04: Read input register 05: Write single coil 06: Write single register 15: Write multiple coils 16: Write multiple registers 23: Read/Write multiple registers
Trigger	Cyclic	Disable: The transaction is never sent Cyclic: The transaction is sent cyclically at the interval specified in the "Poll Interval" parameter. Data change: The data area is polled for changes at the time interval defined by Poll Interval. A transaction is issued when a change in data is detected.

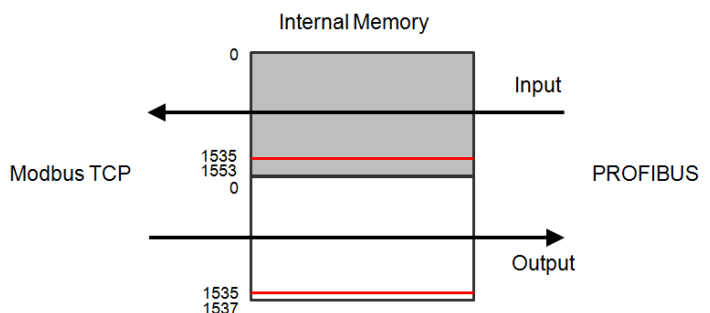
Parameters	Value	Description
Poll interval	100 to 1200000ms	Polling interval in milliseconds; since the module sends all requests in turns, the actual polling interval also depends on the number of requests in the queue and their parameters.
Endian Swap	None, Byte, Word, ByteWord	Data Byte Swapping None: Don't need to swap Byte: 0x0A, 0x0B, 0x0C, 0x0D becomes 0x0D, 0x0C, 0x0B, 0x0A. Word: 0x0A, 0x0B, 0x0C, 0x0D becomes 0x0C, 0x0D, 0x0A, 0x0B. ByteWord: 0x0A, 0x0B, 0x0C, 0x0D becomes 0x0D, 0x0C, 0x0B, 0x0A. There are two phases in changing ByteWord 1). 0x0A, 0x0B, 0x0C, 0x0D becomes 0x0B, 0x0A, 0x0D, 0x0C. 2). 0x0B, 0x0A, 0x0D, 0x0C becomes 0x0D, 0x0C, 0x0B, 0x0A.
Read starting address		Station Address. The range is from 0 to 65535
Read quantity		Specifies how many quantities to read. There are two kinds of quantity units, bit and 16 bits, associated with the function field. The range is from 1 to 125.
Read internal address		This parameter specifies the location of the trigger byte in internal memory for the Read command.
Write starting address		Station Address. The range is from 0 to 65535
Write quantity		Specifies how many quantities to write. There are two kinds of quantity units, bit and 16 bits, associated with the function field. The range is from 1 to 121.
Write internal address		This parameter specifies the location of the trigger byte in internal memory for the Write command.

To remove a Modbus command, click the specified command and then click the remove button.

Data Exchange Between Modbus TCP and PROFIBUS

The MGate’s internal memory is used to exchange data between Modbus and PROFIBUS. On both sides of the connection, the internal memory data will be used as the new data to send to connected devices. For example, with Modbus function 06 - write holding register writes a word into the device’s register. Configure the MGate to use this command if you would like to use the specified internal memory data as the new data. For PROFIBUS, the output I/O module will use the same method to retrieve data from the internal memory to write the new data to the remote device. The received data will also be put into the internal memory for the Modbus read command and PROFIBUS input I/O modules.

Before configuring the internal memory, you first need to understand the internal memory structure. The MGate’s internal memory is divided into two parts: one for input direction and another for output. Input means data is transferred from the PROFIBUS side to the Modbus TCP. Output works in the opposite direction, as indicated in the following diagram.



Internal Memory Address

The MGate 5101-PBM-MN can support up to 1536 bytes of input and 1536 bytes of output data. Input addresses 1536 to 1553 are reserved for checking the status of the PROFIBUS Master or Slave. Output addresses 1536 to 1537 are used for changing the status of the PROFIBUS Master, as indicated in the following tables.

Input Data Memory

0 to 1535	Input Data	
1536 to 1537	Status word	bit 1:0 = Master Mode 00: Offline 01: Stop 10: Clear 11: Operate bit 15:2 reserved
1538 to 1553	Communication list	1538: bit 0..7 = Slave 0..7 1539: bit 0..7 = Slave 8..15 ... 1553: bit 0..5 = Slave 120..125 bit SET -> Slave is in data exchange bit CLEAR -> Slave is not in data exchange

Output Data Memory

0 to 1535	Output Data	
1536 to 1537	Control word	bit 1:0 = Master Mode 00: Reserved 01: Stop 10: Clear 11: Operate bit 15:2 reserved

Internal Memory Configuration for the PROFIBUS I/O Module

For PROFIBUS, the assigned internal memory address is shown in the MGate Manager PROFIBUS Settings window. The **Input addr.** is the offset address in internal memory for the input direction. The **Output addr.** is the offset address in internal memory for the output direction. This address is assigned by MGate Manager automatically when the I/O module is just created, but you can modify it manually. However, when assigning an address manually, make sure that the new offset address does not overlap with the offset addresses assigned to other I/O modules.

Note the unit of the offset is bytes, which is different from the Modbus TCP configuration.

Slot	CFG data	Order number/designation	Input addr.	Output addr.	Timeout	Fault value
1	0x11	Input: 2 Bytes	0...1		0	
2						
3	0x21	Output: 2 Bytes		0...1	0	00 00
4						
5						
6						
7						

Internal Memory Configuration for Modbus TCP Master mode

The Modbus TCP side has two different modes: slave mode and master mode. For Maser Mode, the internal memory configuration is in the Modbus command edit dialog.

The following example demonstrates this concept. Configure the I/O as shown below table. To use the input data to update the remote Modbus TCP device, use 06-write single register with 2 bytes. The "Internal address" can refer to the I/O module setting, so use 8 in this example. This command will retrieve the data in offset address 8 of internal memory as the new data to update the remote device. The data in this address will be updated cyclically by the PROFIBUS I/O module as you can see below. Because you want to transfer 4 bytes of data, for Modbus this means a length of two registers.

For the output direction, use the same way to configure the Modbus TCP command.

The screenshot shows the MGate Manager configuration interface. At the top is a table with columns: Slot, CFG data, Order number/designation, Input addr, Output addr, and Timeout (ms). Below the table are two 'In host/Modbus Master' dialog boxes. Red boxes and arrows indicate the following mappings:

- Table Row 1: Output addr '8...11' maps to Modbus Function '06-Write single register' and Internal Address '8' in the right dialog.
- Table Row 2: Input addr '2...5' maps to Modbus Function '03-Read holding registers' and Internal Address '2' in the left dialog.

Internal Memory Configuration for Modbus TCP Slave Mode

In slave mode, you do not need to configure any of the MGate’s Modbus command settings, but you need to know how to send the right Modbus TCP command to the MGate. In Modbus, you can either request “register data” or “bit data.” For register data, the length is two bytes (16 bits). For bit data, the length is 1 bit. So there are 01, 02, 05, 15 Modbus command support bit access, and 03, 04, 06, 16, 23 command support register access.

If you want to access the (n)th bit data in MGate internal memory offset (N) with Modbus bit access command: For bit access, the Modbus address should be **$N*8*2+n+1$** . (**N, n is zero based**)

If you want to access the data in MGate internal memory offset (N) with Modbus register access command: For bit access, the Modbus address should be **$N/2+1$** .

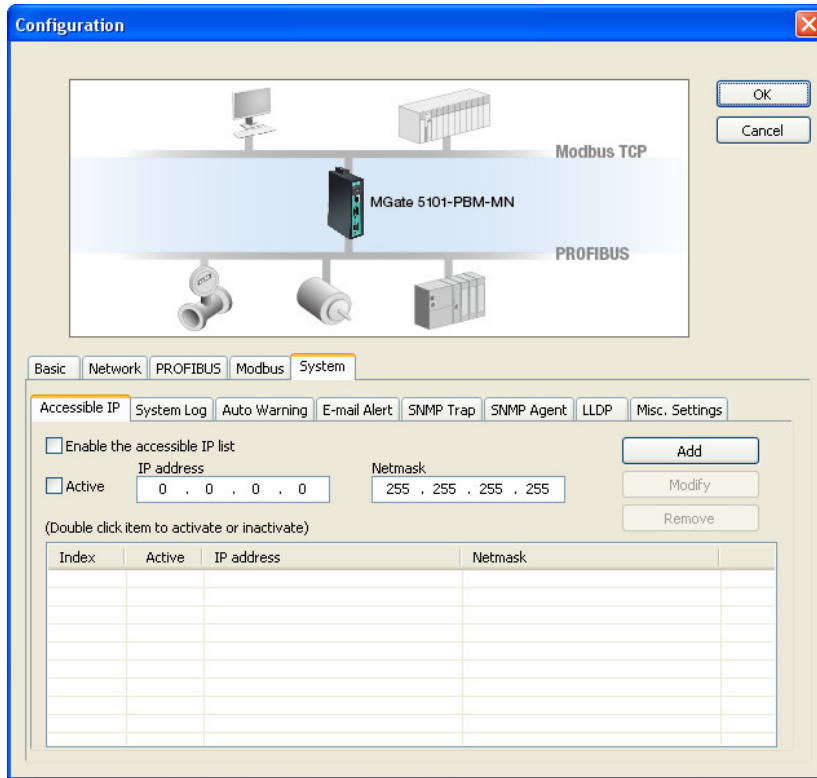
Slot	CFG data	Order number/designation	Input addr.	Output addr.
1	0x11	Input: 2 Bytes	0...1	
2	0x13	Input: 4 Bytes	8...11	
3	0x21	Output: 2 Bytes		0...1
4	0x23	Output: 4 Bytes		2...5
5				
6				
7				
8				
9				

With the following example, if user want to access the 2nd bit of the input address 1. The users have to use the [01-read coil] command to read the address = $1*8*2+2+1 = 19$. If users want to access the 4 bytes input data with Modbus register access command, the users have to use the [03-read holding register] command to read the address = $8/2+1 = 5$ with length 2.

System Settings

This configuration tab includes several system level settings, such as security, alarm, and information log. Most of these settings are optional.

Accessible IP Settings



These settings are used to restrict access to the module by IP address. Only IP addresses on the list will be allowed access to the module. You may add a specific address or range of addresses by using a combination of IP address and netmask, as follows:

To allow access to a specific IP address

Enter the IP address in the IP address field, and enter 255.255.255.255 in the Netmask field.

To allow access to hosts on a specific subnet

For both the IP address and Netmask fields, use 0 for the last digit (e.g., "192.168.1.0" and "255.255.255.0").

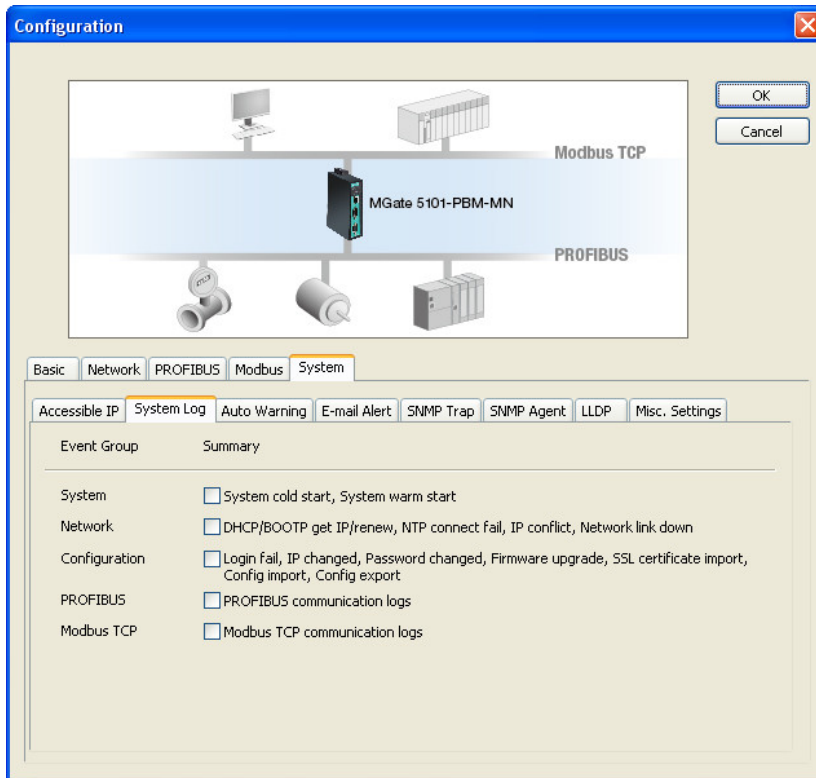
To allow access to all IP addresses

Make sure that **Enable the accessible IP list** is not checked.

Additional configuration examples are shown in the following table:

Desired IP Range	IP Address Field	Netmask Field
Any host	Disable	Enable
192.168.1.120	192.168.1.120	255.255.255.255
192.168.1.1 to 192.168.1.254	192.168.1.0	255.255.255.0
192.168.1.1 to 192.168.255.254	192.168.0.0	255.255.0.0
192.168.1.1 to 192.168.1.126	192.168.1.0	255.255.255.128
192.168.1.129 to 192.168.1.254	192.168.1.128	255.255.255.128

System Log

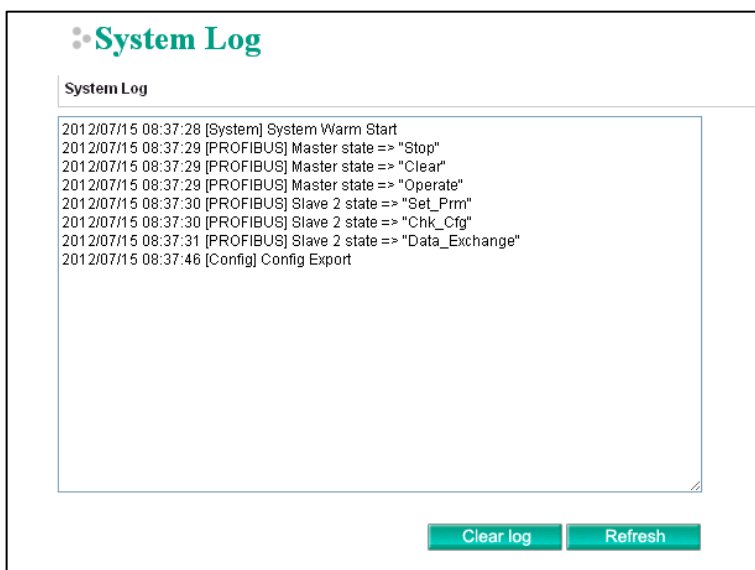


This setting will enable the MGate firmware to record important events for future verification. The recorded information can only be displayed in the web console. See Chapter 5 for details.

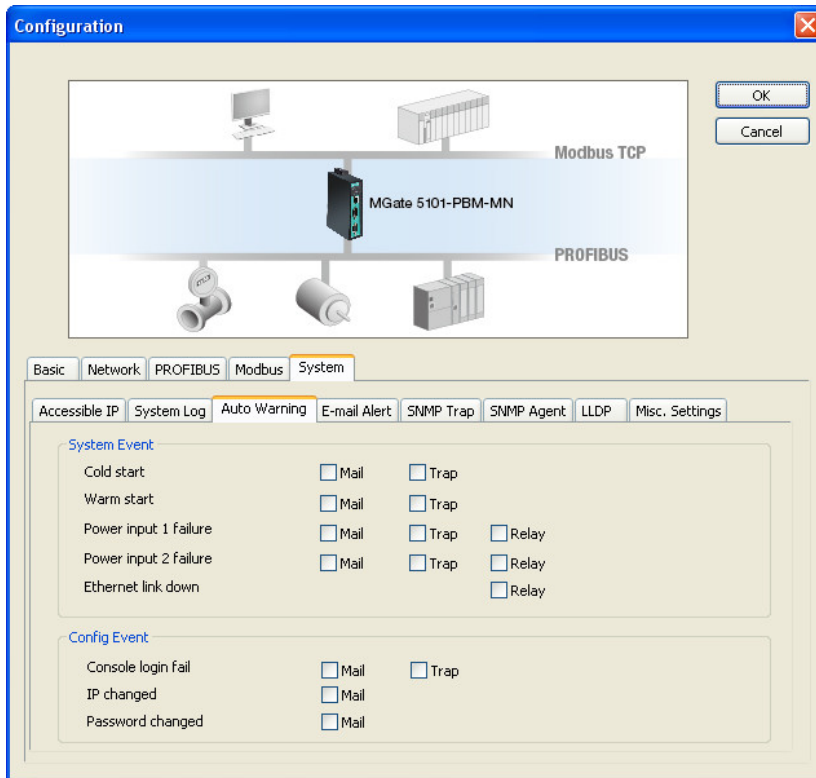
The following events can be recorded:

Parameters	Event
System	System Cold Start, System Warm Start.
Network	DHCP/BOOTP Get IP/Renew, NTP Connect Fail, IP Conflict, Network Link Down.
Configuration	Login Fail, IP Changed, Password Changed, Firmware Upgrade, SSL Certificate Import, Configuration Import/Export.
PROFIBUS	PROFIBUS Communication logs.
Modbus	Modbus Communication logs.

Users can view records from the web console or text mode console.

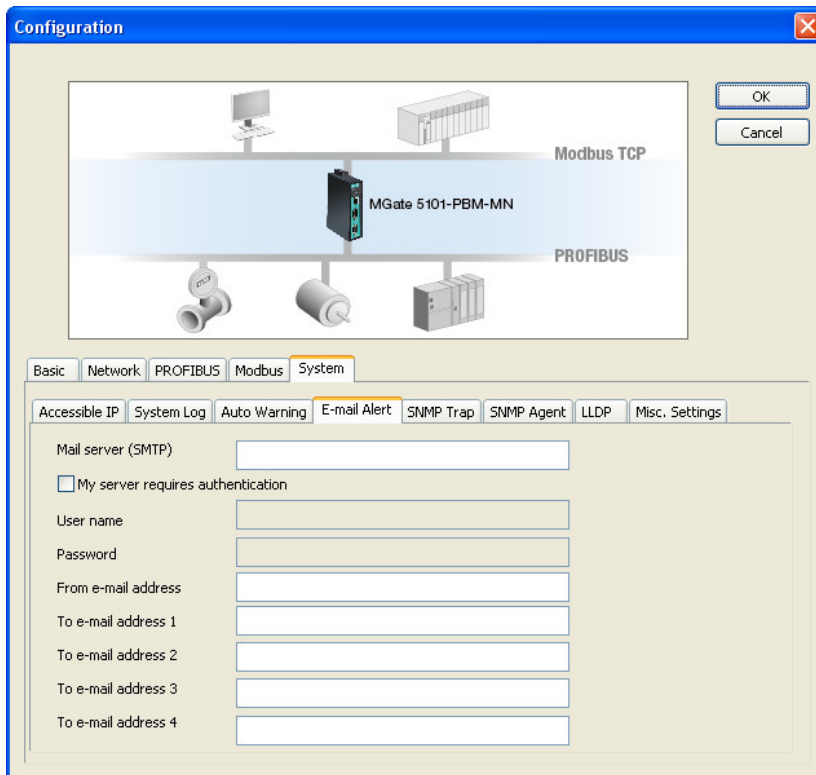


Auto Warning Setting



Auto Warning will be triggered in the event of a power failure or when Ethernet links are disconnected. When a checked trigger condition occurs, the MGate will open the circuit of the relay output. To enable an e-mail alert, configure the e-mail address on the E-mail Alert page. Likewise, to enable SNMP Trap alerts, configure SNMP trap server on the SNMP Trap page.

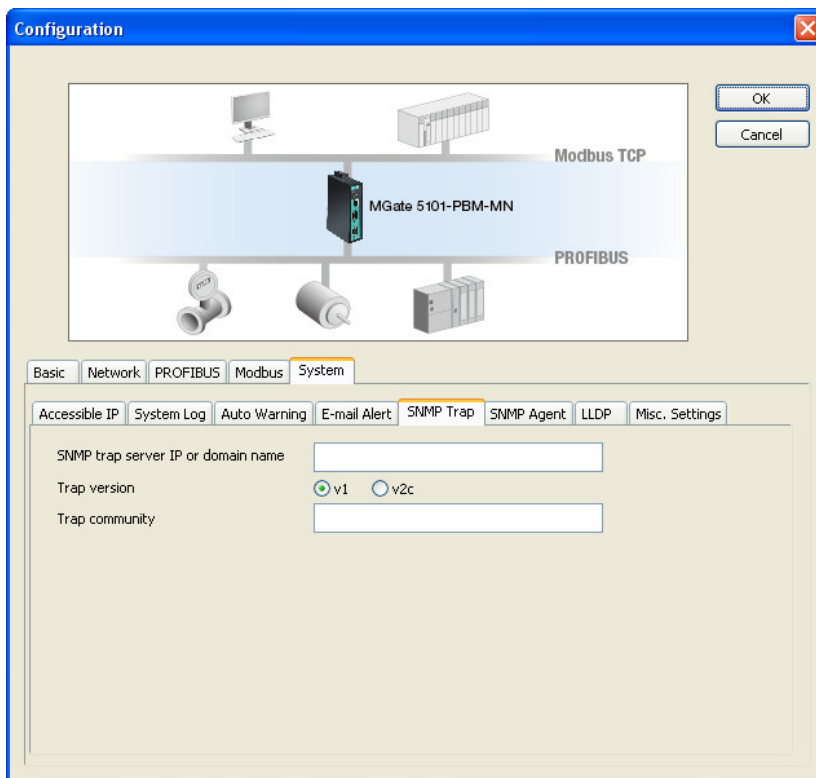
E-mail Alert



The MGate gateway will send a warning message via SMTP to the E-mail addresses entered on the **E-mail Alert** tab.

Parameters	Value	Description
Mail server (SMTP)	IP address or server name	SMTP server's IP address or server name
User name/ Password	(an alphanumeric string)	If the mail server requires user authentication, select the checkbox and enter the user name and password
From E-mail address	username@domain.name	To show the sender's e-mail address
To e-mail address 1-4	username@domain.name	Four e-mail recipients can be added to the list

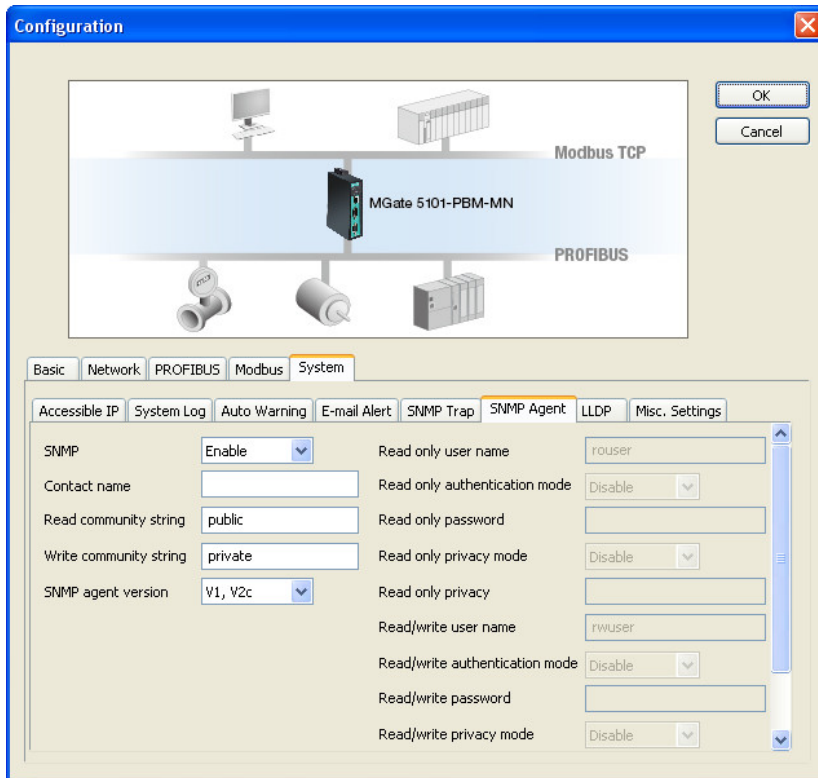
SNMP Trap



The MGate gateway supports Simple Network Management Protocol (SNMP).

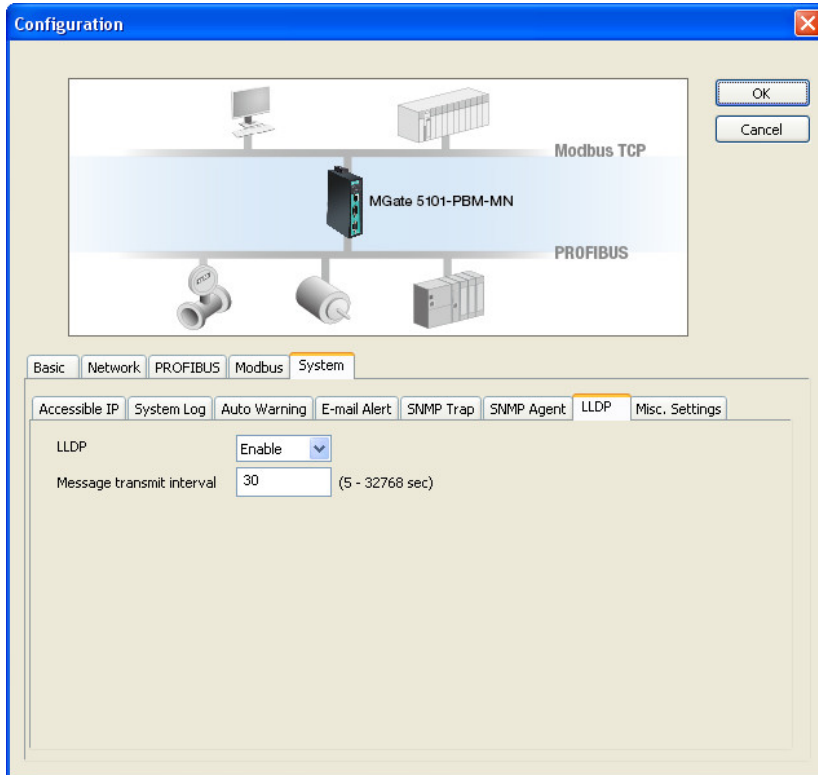
Parameters	Value	Description
SNMP trap server IP or domain name	IP or domain name	The MGate 5101-PBM-MN supports SNMP trap; enter the SNMP trap server IP or domain name
Trap version	v1	Choose the trap version of the SNMP server, the default value is version 1
Trap community		Use this field to designate the SNMP trap community

SNMP Agent



The SNMP Agent tag allows you to modify SNMP related settings.

LLDP Settings

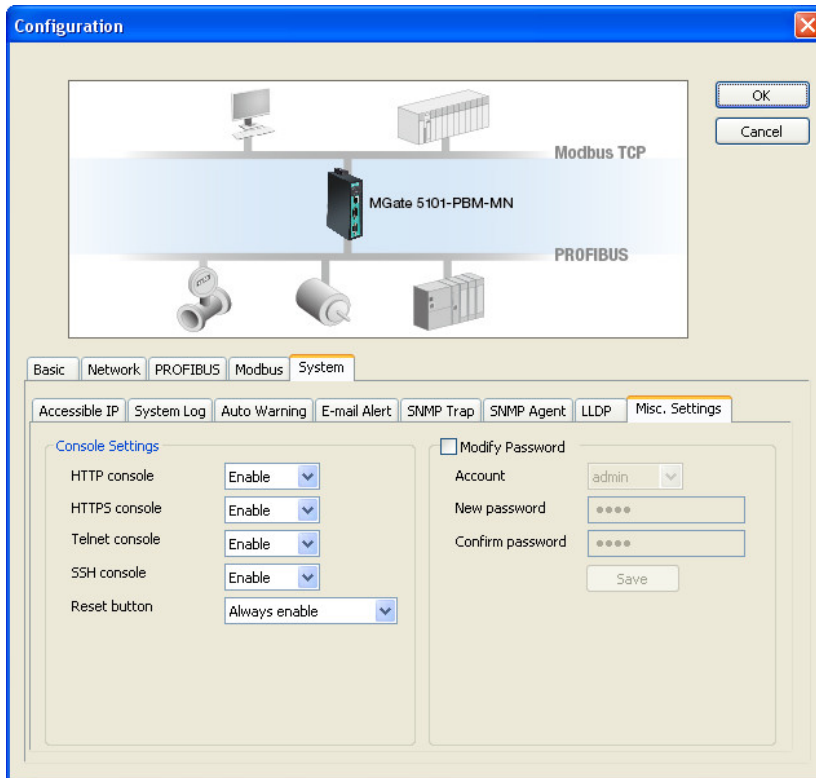


The MGate gateway supports Link Layer Discovery Protocol (LLDP).

Parameters	Value	Description
LLDP	Enable/Disable	To enable/disable the LLDP function
Message transmit	5 to 32768	Message transmit interval

Misc. Settings

This tab includes **Console Settings** and **Modify Password**.



Console Settings

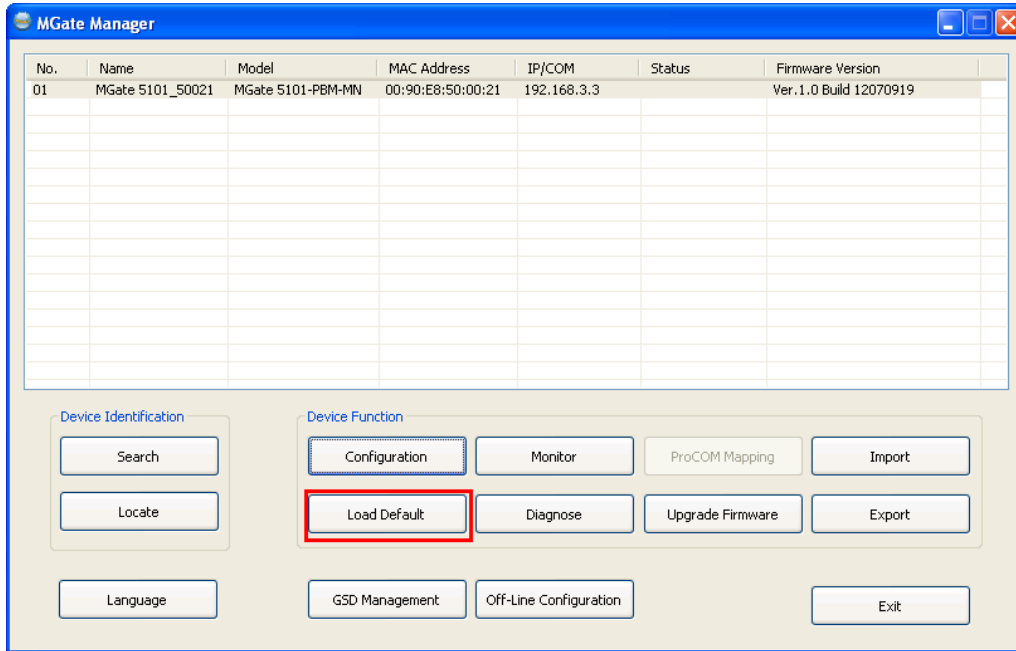
Parameters	Value	Description
HTTP/HTTPS	Enable/Disable	This setting is to enable/disable the web console. For security reasons, you can only enable HTTPS, or disable all settings. The only way to access the configuration is from telnet/ssh.
Telnet/SSH	Enable/Disable	This setting is to enable/disable the text mode console. For security reasons, you can only enable HTTPS, or disable all settings. The only way to access the configuration is from telnet/ssh.
Reset button protect	Disable after 60 sec, Always enable	The MGate has a reset button to load factory default settings. For security reasons, you can disable this function. In disabled mode, the MGate will still enable this function within 60 seconds after boot-up just in case you really need to use the reset function.

Modify Password

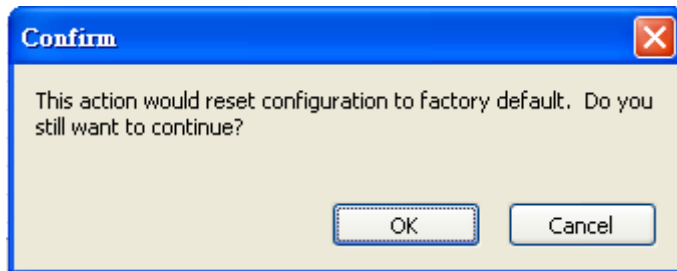
Parameters	Value	Description
Account	admin, user	You can modify the password for different accounts. The MGate provides two different account levels. admin: Can access and modify all the settings through the console. user: Can view settings but cannot change anything. Note: The default password for admin is moxa .

Load Default

Click **Load Default** to reset the unit to factory default values.



Click the **OK** to load default values, or click **Cancel** cancel the request.



MGate Manager will automatically execute a Broadcast Search to all MGate units on the LAN once the reset configuration is completed. Your MGate should reappear in the list of units.

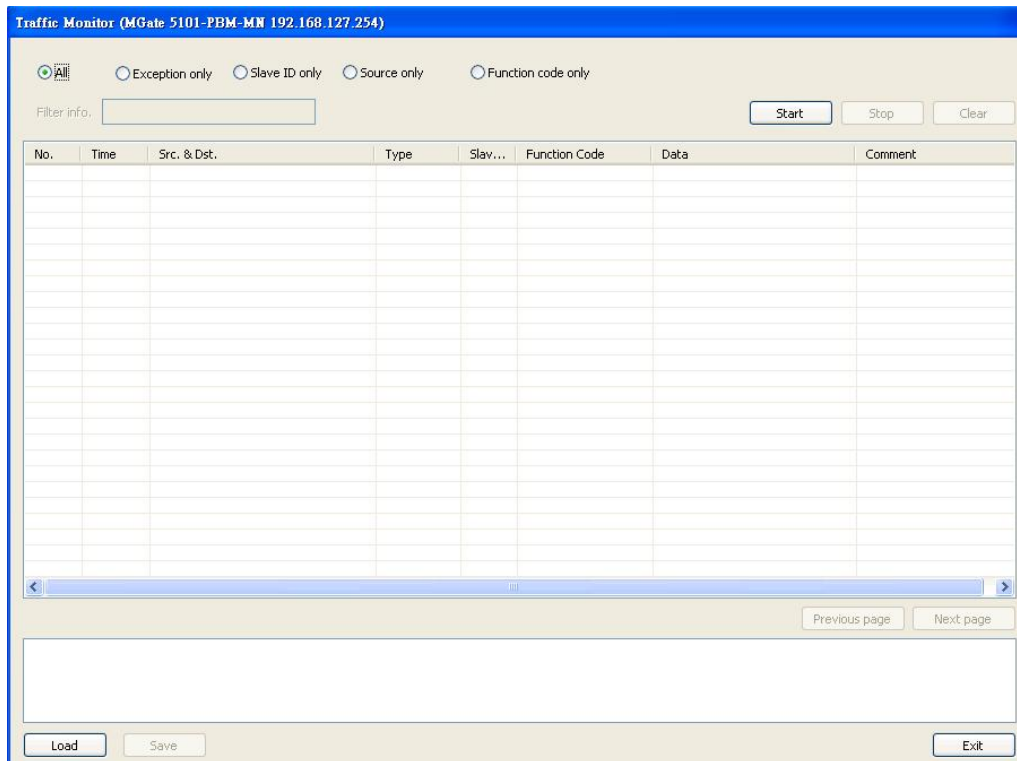


ATTENTION

Load Default will completely reset the configuration of the unit, and all of the parameters you have saved will be deleted. Do not use this function unless you are sure you want to completely reset your unit.

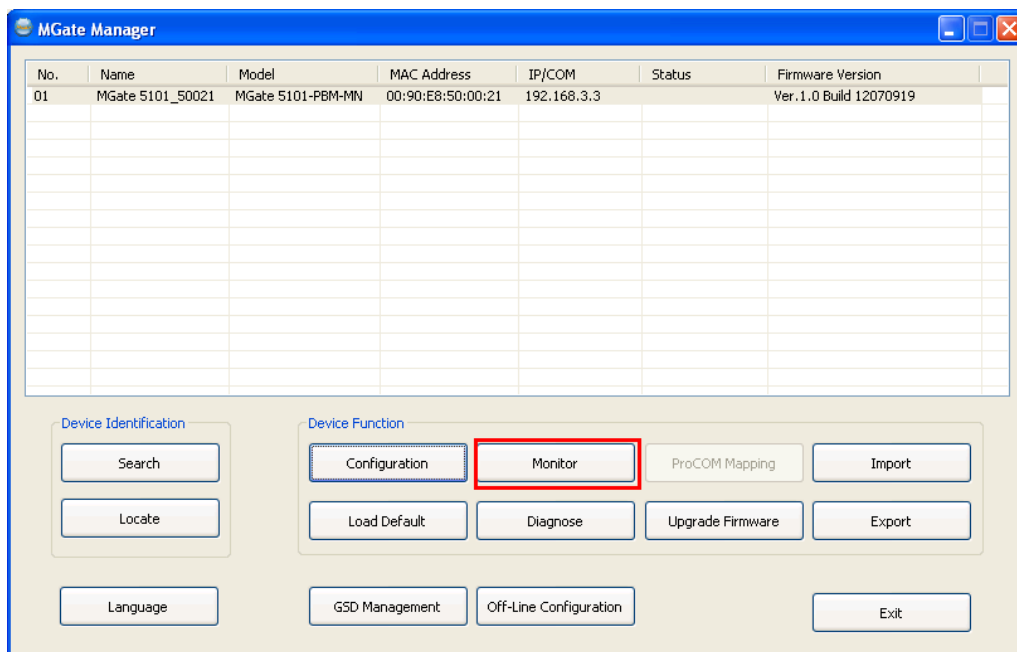
Monitoring Modbus Activity

For troubleshooting or management purposes, you can monitor the data passing through any MGate 5101-PBM-MN on the Modbus side. Data events will be logged as they pass through the gateway. Rather than simply echoing the data, MGate Manager presents the data in an intelligent, easily-understood format, with clearly designated fields including source, type, destination, contents, and more. Events can be filtered in different ways (Exception, Slave ID, Source, Function Code), and the complete log can be saved to a file for later analysis.

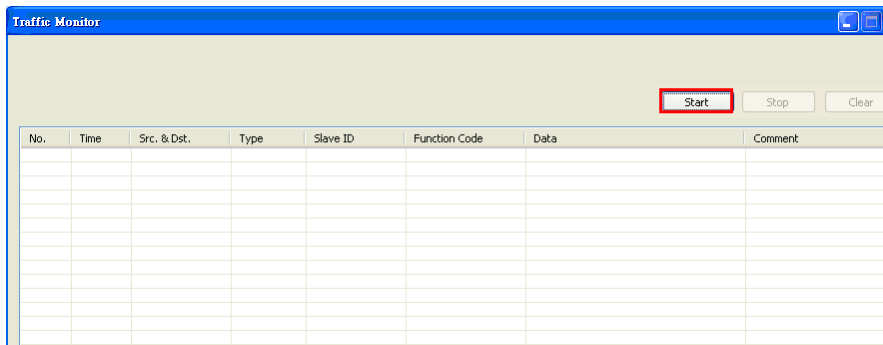


Open Traffic Monitor Window

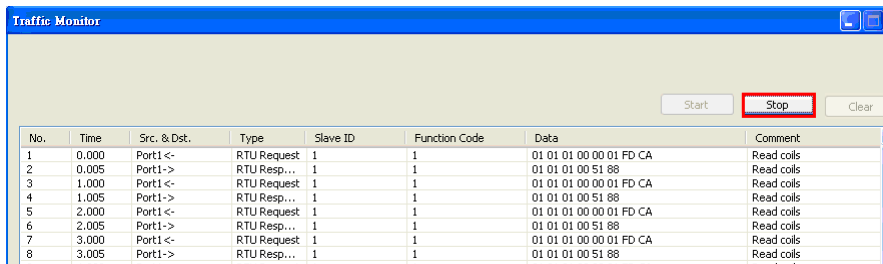
Select the unit that you wish to monitor and click **Monitor** to open the Traffic Monitor window.



In the Traffic Monitor window, click **Start** to begin live monitoring of the data passing through the selected MGate 5101-PBM-MN unit.

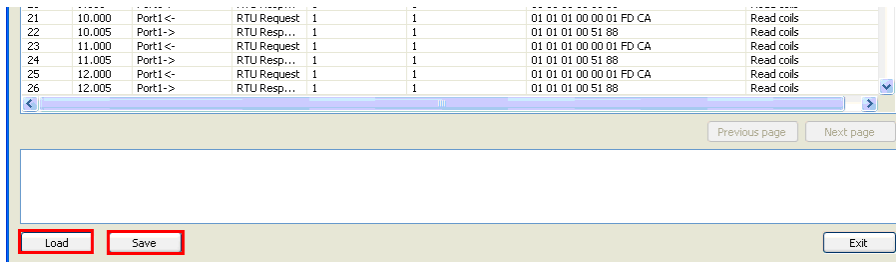


To stop capturing the log, press the **Stop** button.



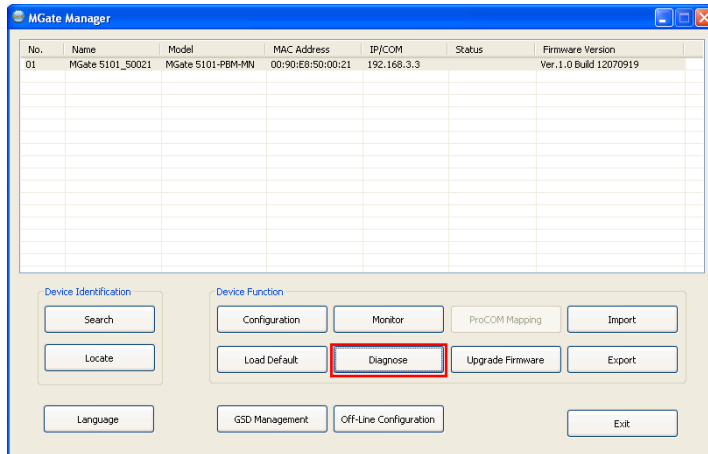
Save Log to File

To save the data log to a file, click **Save**. You may retrieve a saved log by clicking **Load**.



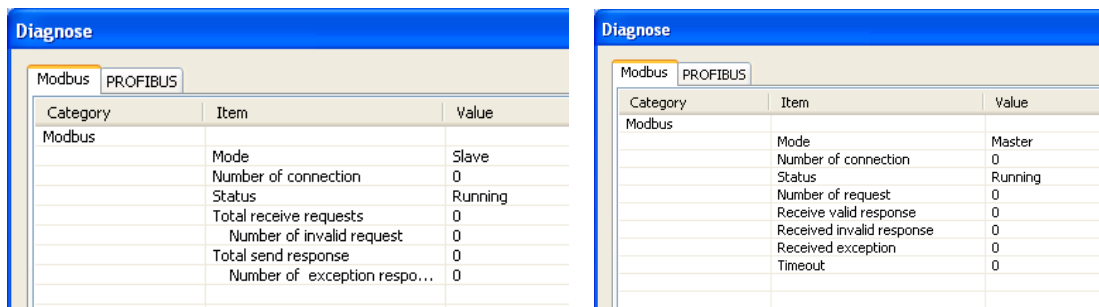
Diagnose

The MGate also provides statistics for troubleshooting, especially for PROFIBUS slave devices. For most applications, the MGate will connect to several PROFIBUS slaves at the same time. If some devices don't work well, it is difficult for users to know which device has the communication problem. Use this function to identify and solve problems immediately. Click the **Diagnose** button to open the diagnose window.

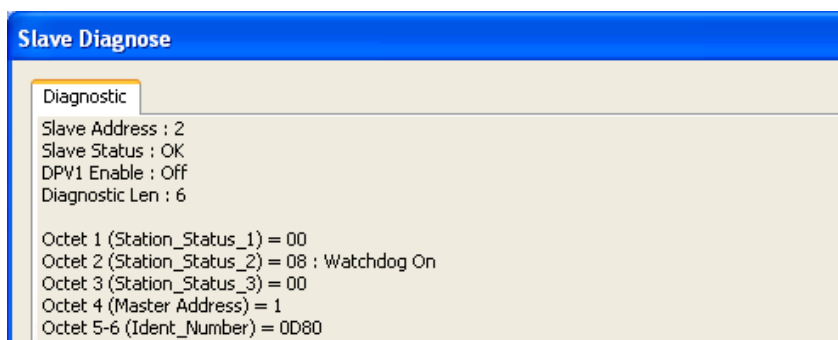
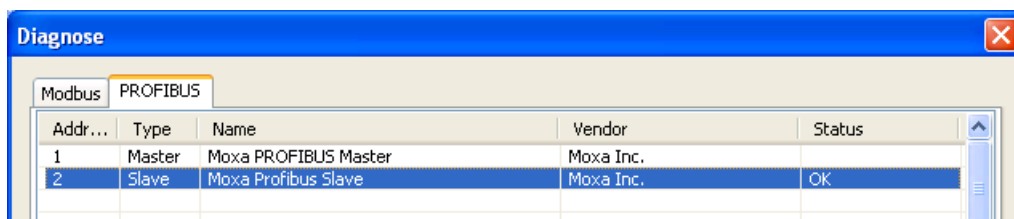


The diagnose windows, which include Modbus and PROFIBUS information, will be displayed.

For Modbus, different information will be displayed for master and slave settings.



For PROFIBUS, all configured devices will be displayed. Double click a slave device to display detailed information for that device.



This information displays the PROFIBUS DP diag_data information.

Octet 1 (StatioFunction Namen_status_1):

Bit	Value	Description
Bit 7	Diag.Master_Lock	This bit is set if the slave is parameterized by another master.
Bit 6	Diag.Prm_Fault	This bit is set if the master's last request is invalid.
Bit 5	Diag.Invalid_Slave_Response	This bit is set if the master receives an invalid slave response.
Bit 4	Diag.Not_Supported	This bit is set if the last master request is not supported by the slave.
Bit 3	Diag.Ext_Diag	This bit is set if the diag_data contains the vendor defined message.
Bit 2	Diag.Cfg_Fault	This bit is set if the slave configuration is different from the master.
Bit 1	Diag.Station_Not_Ready	This bit is set if the slave is not ready for data exchange.
Bit 0	Diag.Station_Non_Existent	This bit is set if the slave can't be reached.

Octet 2 (Station_status_2):

Bit	Value	Description
Bit 7	Diag.Deactivated	This bit is set if the slave is marked as inactive within the parameter set.
Bit 6	Reserved	
Bit 5	Diag.Sync_Mode	This bit is set if the slave receives the sync control command.
Bit 4	Diag.Freeze_Mode	This bit is set if the slave receives the freeze control command.
Bit 3	Diag.WD_On (Watchdog on)	This bit is set if the watch dog control is activated by the slave.
Bit 2	N/A	(Not used)
Bit 1	Diag.Stat_Diag	This bit is set if the slave requests the master to send the diag_data request.
Bit 0	Diag.Prm_Req	This bit is set if the slave's request has been changed.

Octet 3 (Station_status_3):

Bit	Value	Description
Bit 7	Diag.Ext_Diag_Overflow	This bit is set if the more diag information is provided in Ext_diag_data.
Bit 0 to 6	Reserved	

Octet 4 (Station_status_4):

Bit	Value	Description
Bit 0 to 7	Diag.Master_Add	The master PROFIBUS address.

Octet 5 to 6: Ident_number

The manufacturer's identifier number for the slave device. The number can also be listed in GSD file.

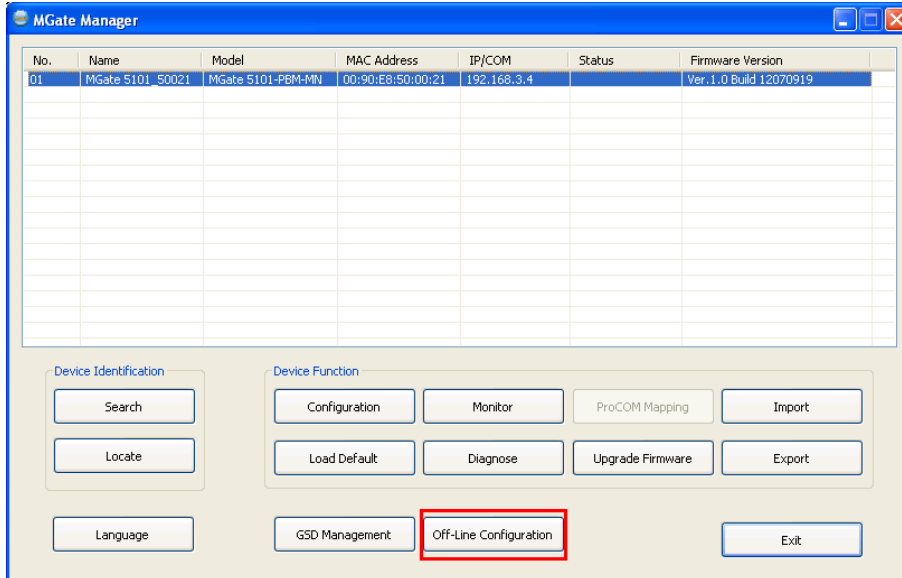
Octet 7 to 32: Exg_Diag_data

Diagnostic data specified by the slave device.

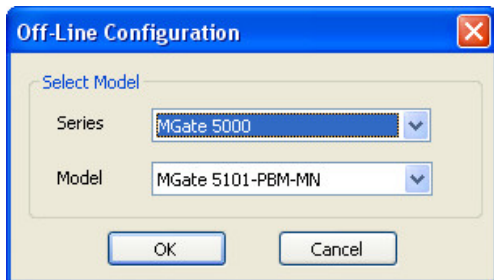
Create/Modify the Configuration File

You can create or modify a configuration file manually through MGate Manager. A configuration file can be generated using the **Export** function. The file generated by this function can then be used with the **Import** function.

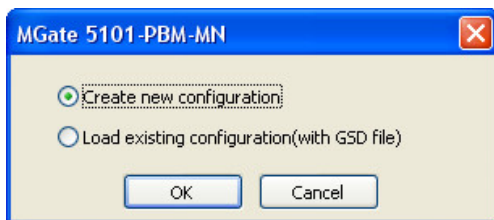
To use this function, click the **Off-Line Configuration** button to load the configuration window.



Click **OK** to proceed to the next step.



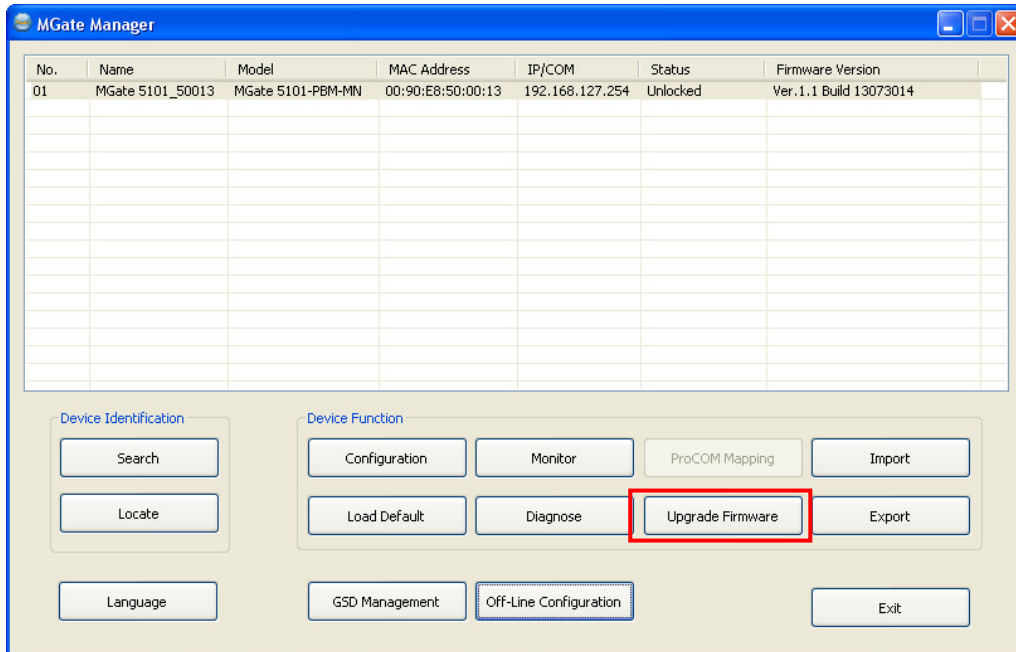
Choose **Create new configuration** to create a new configuration, or **Load existing configuration** to edit the configuration. In the latter case, you may use a file generated by the Export function.



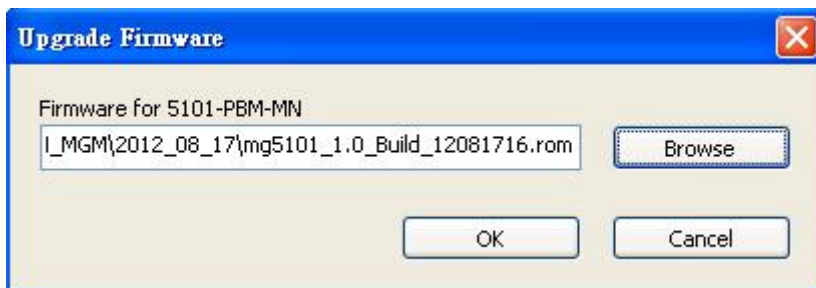
Refer to the **Modifying the Configuration** section for more information. When all configuration items are finished, click **OK** to save the settings to the file.

Upgrading the Firmware

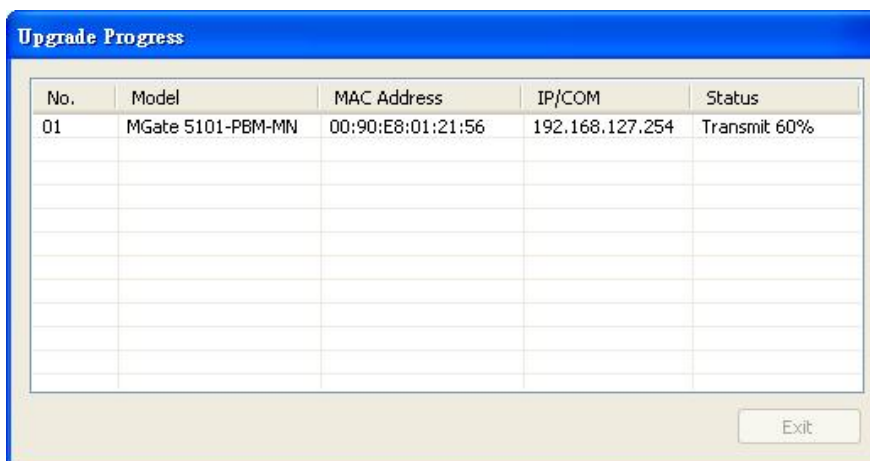
Firmware updates for the MGate 5101-PBM-MN can be downloaded from Moxa’s website at www.moxa.com. After downloading a new firmware file to your PC, use MGate Manager to load it into your MGate 5101-PBM-MN. Select the desired unit from the MGate Manager list and then click **Upgrade Firmware** to begin the upgrade process.



The dialog boxes will guide you through the process. Click **Browse** to locate the firmware file for your MGate model.



The **Upgrade Progress** window indicates the status of the upgrade.

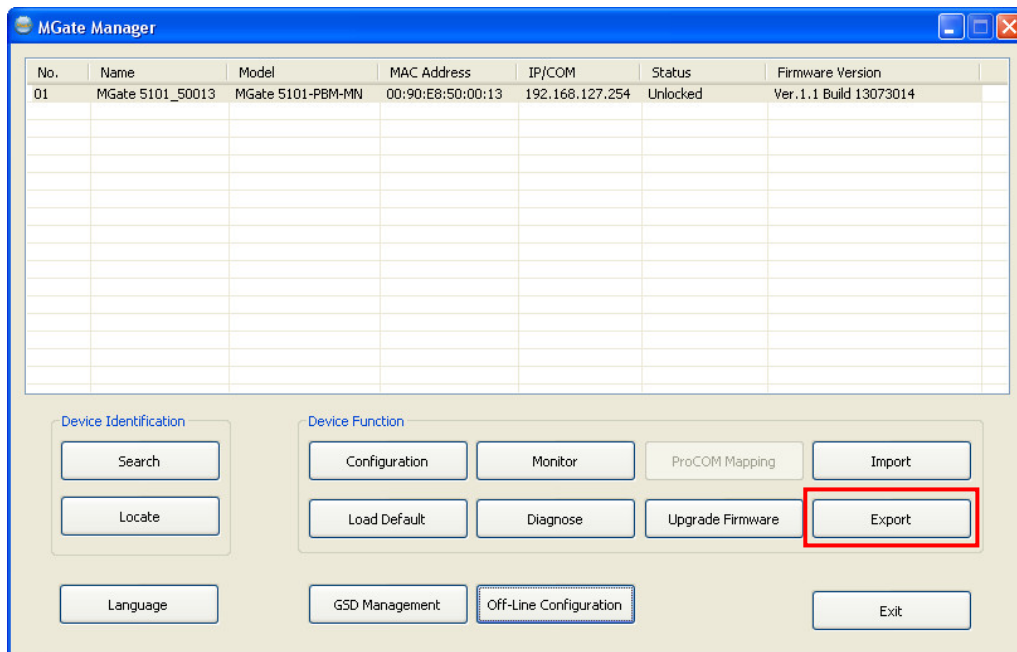


Once the firmware has been successfully written to the unit, click **Exit** to close the Upgrade Firmware window. MGate Manager will automatically execute a Broadcast Search to all MGate units on the LAN. Your MGate should reappear in the list of units.

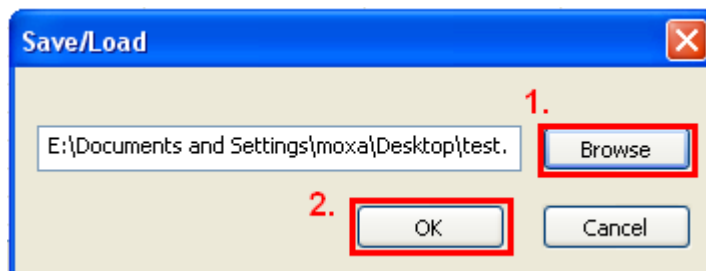
Import/Export

The Import/Export configuration function is a convenient way to apply the same settings to units located at different sites. You can export the configuration as a file, and then import that configuration file into other units at any time.

Click the **Export** button to save all of the configuration settings and parameters of the MGate 5101-PBM-MN to an .ini file.



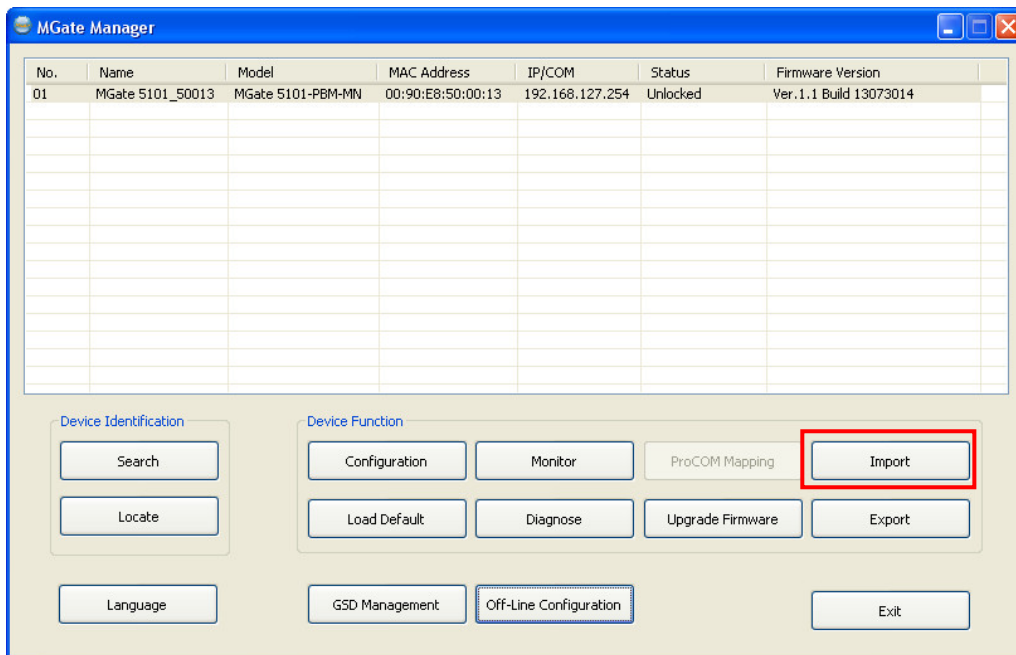
Use the text box and **Browse** button to set the filename and path, and then click **OK**.



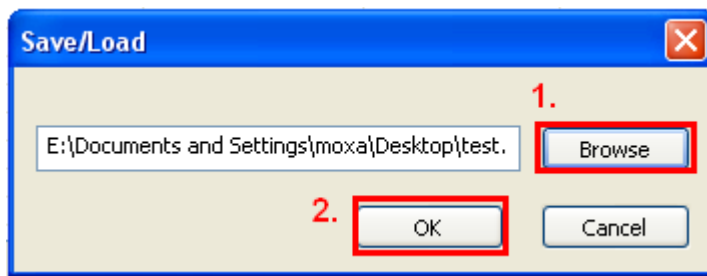
If the export is successful, a confirmation message will pop up. Click **OK** to save the file.



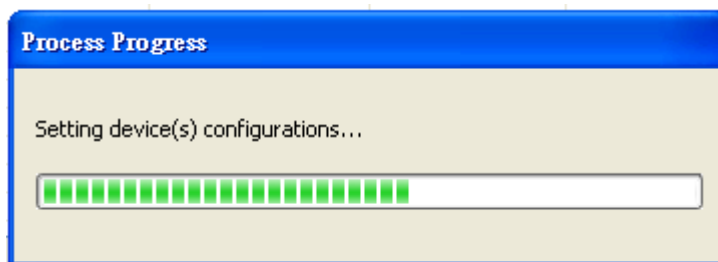
Once the file has been saved, it can be imported into your target unit to duplicate the same settings. Select the target unit first and click the **Import** button to start importing.



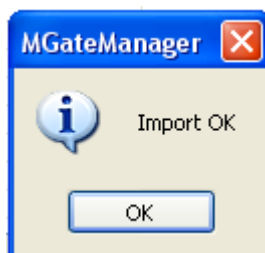
Select the file you want to import, then click the **OK** button



Wait patiently while MGate Manager configures the target device.



If the import is successful, a confirmation message will pop up. Click **OK**.



MGate Manager will automatically execute a Broadcast Search for all MGate units on the LAN. Your MGate should reappear in the list of units.

Configuration (Web Console)

The MGate 5101-PBM-MN also provides a web console for configuration, but only for limited items. For example, the PRFOFIBUS and Modbus TCP settings are not included in the web console and are only available in MGate Manager. Use a browser such as Microsoft Internet Explorer or Google Chrome to access the web console.

To connect to the MGate web console, open the browser and input the MGate's IP address.

http://<MGate IP address>

or

https://<MGate IP address>

Input the account and password and then click **Login**. The account supports two types of users: **admin** and **user**. An "admin" account can modify all of the settings, but a "user" account can only review the settings. A "user" account cannot modify the configuration. The default password for **admin** is **moxa**.

All available configuration items are listed in the menu in left panel. Click an item to display detailed options in right panel. To activate changes, click the **Submit** button before leaving the current page. The MGate may need to restart to activate the settings.

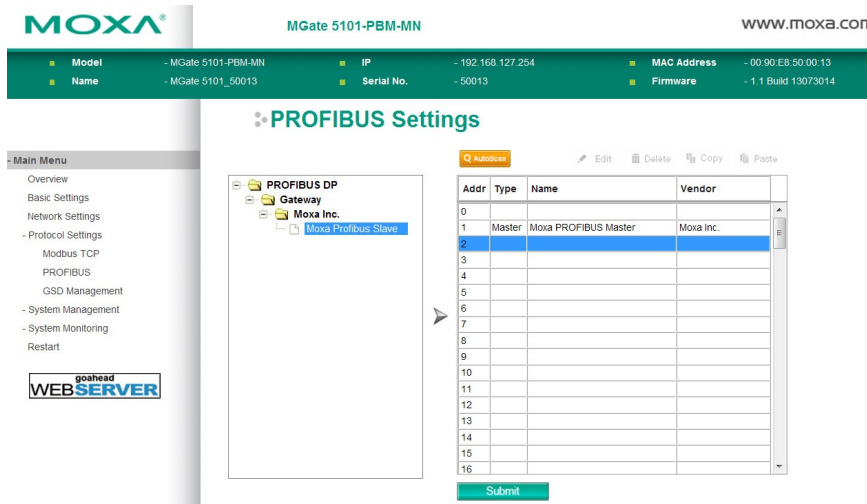
The following functions are the same as in the MGate Manager utility. Click the section listed in the right column for detailed information.

Function	Where to find information
Basic Settings	Configure Device section.
Network Settings	Network Settings section.
Protocol Settings - Modbus TCP	Modbus section.
Protocol Settings - PROFIBUS	PROFIBUS section.
System Management - Accessible IP List	Accessible IP Settings section.
System Management - System Log Settings	System Log section.
System Management - Auto Warning Settings	Auto Warning section.
System Management - E-mail Alert	E-mail Alert section.
System Management - SNMP Trap	SNMP Trap section.
System Management - SNMP Agent	SNMP Agent section.
System Management - LLDP Settings	LLDP Settings section.
System Management - Misc. Settings - Console Settings	Console Settings section.

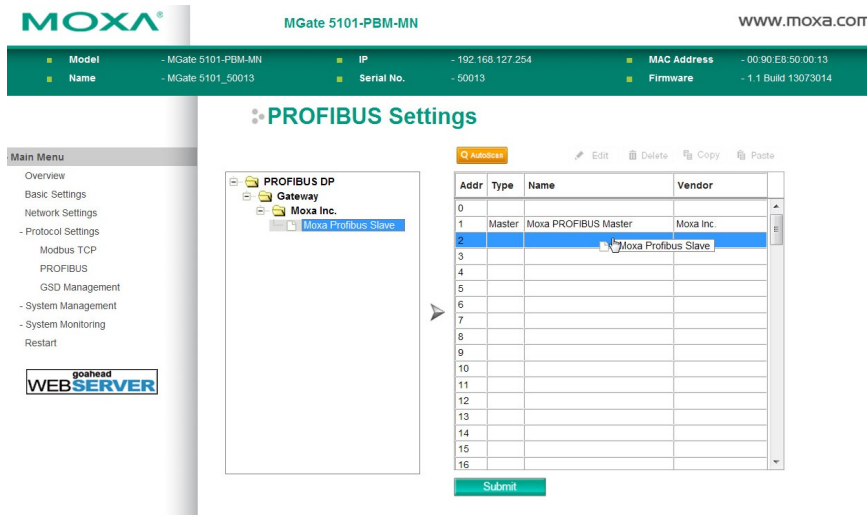
Function	Where to find information
System Management – Misc. Settings - Change Password	Modify Password section.
System Management – Maintenance - Firmware Upgrade	Upgrading Firmware section.
System Management –Maintenance - Configuration Import	Import/Export section.
System Management –Maintenance - Configuration Export	Import/Export section.
System Management –Maintenance - Load Factory Default	Load Default section.

PROFIBUS (Protocol Settings - PROFIBUS)

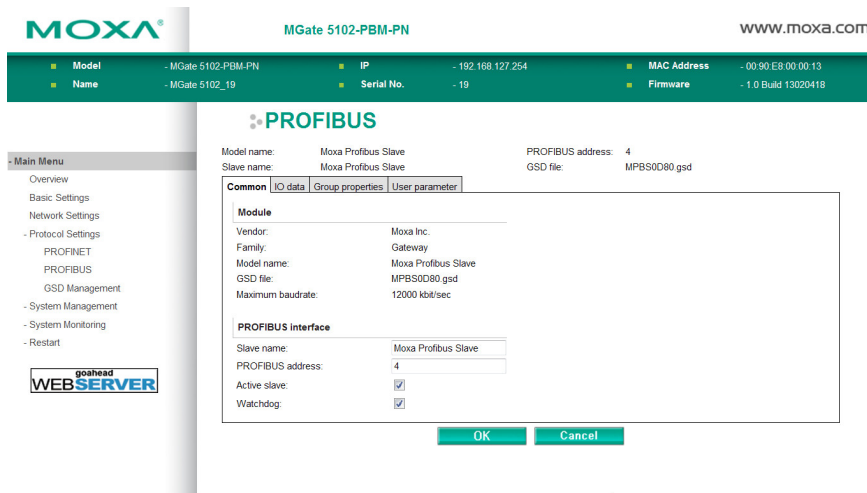
PROFIBUS settings in the Web Console are very similar to what you see in MGate Manager. The device list is on the left side of the window and the current status of the MGate gateway is on the right side.



To add a device to the MGate gateway, drag the slave device to the list on the right side.



After you add the device to the MGate gateway, click the **Edit** button to edit related settings. See **PROFIBUS Settings** in Chapter 4 for a description of each function.



GSD Management (Protocol Settings - GSD Management)

To add a GSD file, click the **Browse** button to locate the directory, and then click **Add** to load the file. Once the GSD file has been added, you will be able to see all of the GSD files in the GSD file list. If you want to export all GSD files, click the Export button to store all of these GSD files.

PROFIBUS GSD Management

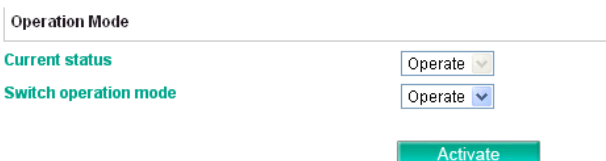


PROFIBUS Control (System Management - Maintenance - PROFIBUS Control)

Users can configure the PROFIBUS interface of MGate to different operation mode. The available options are "Operate", "Clear" and "Stop". Users can click "Activate" to change the mode immediately. The PBM LED will also show the different the status for this change. Please refer to **LED Indicators** section.

This function is only available on web console and text mode console.

PROFIBUS Control



Operation mode for PROFIBUS

Mode	Descriptions
STOP	The parameters are loaded, but the data_exchange is not running.
CLEAR	The data_exchange is running, but the output data will be ignored and only the input data will be transferred.
OPERATE	All PROFIBUS data_exchagne between master and slaves works well.

Ping (System Management – Maintenance – Ping)

This function is for network testing. MGate will send the ICMP packet through network to specified host. Users can see the result at the web console immediately. This function is only available on web console and text mode console.

Certificate (System Management – Certificate)

This is where you can load the Ethernet SSL certificate. Select or browse for the certificate file in the Select SSL certificate/key file field. This function is only available on web console and serial console. (Telnet/SSH console doesn't support this function)

I/O Data View

This page can display the internal memory information for input and output data transfer. It can display the updated value for communication verification. This function is only available on web console and text mode console.

⚙️ I/O Data View

Auto refresh

I/O: Start Address(Hex): Len: Format:

Internal Address	00	01	02	03	04	05	06	07	08	09	0A	0B	0C
0000h	00	00	00	00	00	00	00	00	00	00	00	00	00
0010h	00	00	00	00	00	00	00	00	00	00	00	00	00
0020h	00	00	00	00	00	00	00	00	00	00	00	00	00
0030h	00	00	00	00	00	00	00	00	00	00	00	00	00
0040h	00	00	00	00	00	00	00	00	00	00	00	00	00
0050h	00	00	00	00	00	00	00	00	00	00	00	00	00
0060h	00	00	00	00	00	00	00	00	00	00	00	00	00
0070h	00	00	00	00	00	00	00	00	00	00	00	00	00

PROFIBUS Live List

This page will display the available PROFIBUS device on network. This function is the similar to the MGate Manager Diagnose function, but it can't display the detail information. If the device is disconnected, it will not be displayed in the list even though it is configured in PROFIBUS network. This behavior is different from the MGate Manager Diagnose function. This function is only available on web console and text mode console.

⚙️ PROFIBUS Live List

Address	Type	Name	Associated Master Addr.	Ident-No.	Input Bytes	Output Bytes	Status
1	Master	Moxa PROFIBUS Master	-	0x0DF3	0	0	
2	Slave	Moxa Profibus Slave	1	0x0D80	192	192	OK

Configuration (Text Mode Console)

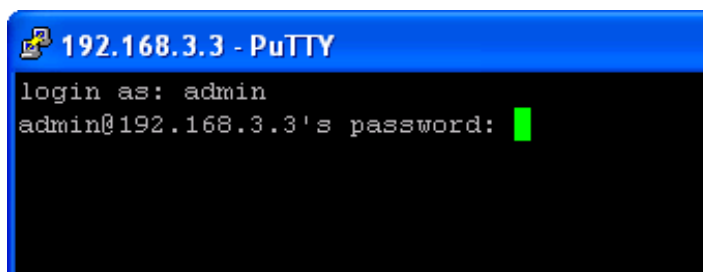
The MGate 5101-PBM-MN supports a text mode console with serial interface, telnet, and SSH protocol. The user interface is the same in all text mode consoles. Note that the text mode console does not support all configuration items. For example, PRFOFIBUS and Modbus TCP settings are not included in the text mode console; they are only available in MGate Manager.

For telnet and SSH, use HyperTerminal or PuTTY to connect to the MGate. Note that the telnet protocol will transfer the account and password information over the Internet using plain text, so telnet is essentially obsolete and should be replaced by the SSH protocol.

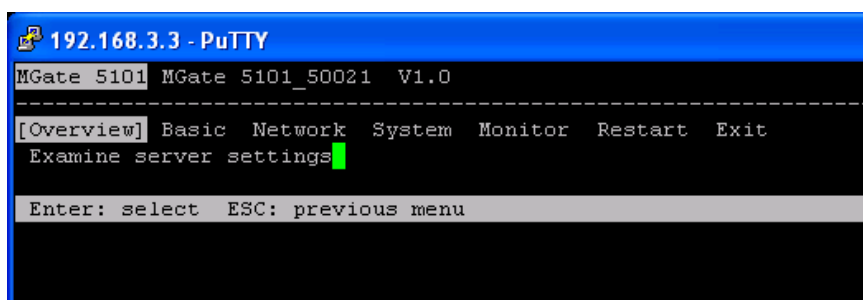
To connect to the MGate telnet/SSH console, load the telnet/SSH program and connect to the MGate IP address.

For the serial interface, use a null modem (crossover) cable to connect the serial port on the host to the serial console port on the MGate's front of panel. The serial console parameters are 115.2kbps, none for parity, 8 data bits, and one stop bit. You can use a terminal program such as PComm Terminal Emulator or PuTTY to connect to the MGate serial console.

On the first page, input the account and password. The account supports two types of users: **admin** and **user**. An "admin" account can modify all of the settings, but a "user" account can only review the settings. A "user" account cannot modify the configuration. The default password for **admin** is **moxa**.



The text mode console will display the menu driven interface. Users can use arrow key to move the menu bar. To select the option, please press the "Enter" key to go next level menu. To go previous level menu, please press "Esc" key to quit. If necessary, MGate will need to restart to activate the setting.



The following functions are the same as MGate Manager utility and web console. Please refer to the relative sections.

Function	Note
Basic	Please refer to Configure Device section.
Network	Please refer to Network Settings section.
System - Accessible_ip	Please refer to Accessible IP Settings section.
System - Sys_log	Please refer to Log Settings section.
System - auto_warning	Please refer to Auto Warning section.
System - Misc. - Console	Please refer to Console Settings section.
System - Misc. - password	Please refer to Modify Password section.
System - maintenance - profibus_ctrl	Please refer to PROFIBUS Control section.
System - maintenance - Ping	Please refer to Ping section.
System - maintenance - Upgrade	Please refer to Upgrading Firmware section
System - maintenance - Import/Export	Please refer to Import/Export section.
System - maintenance - Default	Please refer to Load Default section.
System - Certificate	Please refer to Certificate section.
Monitor - System - sys_log	Please refer to Log Settings section.
Monitor - System - relay_state	Please refer to Auto Warning section.
Monitor - Live_list	Please refer to PROFIBUS Live List section.
System - I/O data view	Please refer to I/O Data View section.