

# PM-7500 Series

**Gigabit and Fast Ethernet modules for PT-7528-24TX models rackmount Ethernet switches**

## Specifications

### Interface

**RJ45 Ports:** 10/100/1000BaseT(X) auto negotiation speed, F/H duplex mode, and auto MDI/MDI-X connection

**Fiber Ports:** 100/1000BaseFX ports (SC/ST or SFP LC connector)

### Optical Fiber

Spec Label:

	Multi-mode	Single-mode	Single-mode, 80 km	Multi-mode
Wavelength	1300 nm	1310 nm	1550 nm	1300 nm
Max. TX	-10 dBm	0 dBm	0 dBm	-10 dBm
Min. TX	-20 dBm	-5 dBm	-5 dBm	-20 dBm
RX Sensitivity	-32 dBm	-34 dBm	-34 dBm	-32 dBm
Link Budget	12 dB	29 dB	29 dB	12 dB
Typical Distance	5 km <sup>a</sup> 4 km <sup>b</sup>	40 km <sup>c</sup>	80 km <sup>d</sup>	5 km <sup>a</sup> 4 km <sup>b</sup>
Saturation	-6 dBm	-3 dBm	-3 dBm	-6 dBm

- a. 50/125 μm, 800 MHz\*km fiber optic cable
- b. 62.5/125 μm, 500 MHz\*km fiber optic cable
- c. 9/125 μm single-mode fiber optic cable
- d. 9/125 μm single-mode fiber optic cable (80 km)

## Ordering Information

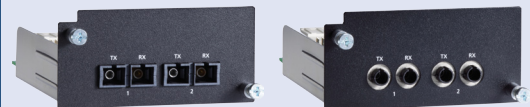
### Rackmount Ethernet Switch System and Interface Module Compatibility Chart

#### Modular Rackmount Ethernet Switch System:

PT-7528-24TX models, slot 1 reserved for installing PM-7500 modules

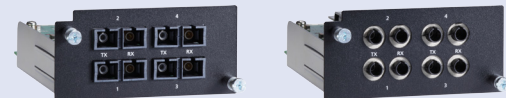


#### Fast Ethernet Interface Modules, PM-7500 Series



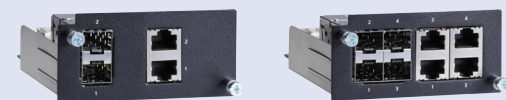
PM-7500-2MSC  
PM-7500-2SSC

PM-7500-2MST



PM-7500-4MSC  
PM-7500-4SSC

PM-7500-4MST



PM-7500-2GTXSFP

PM-7500-4GTXSFP

### Fast Ethernet Modules, PM-7500 Series

Available Models	Port Interface			
	100BaseFX			Combo Port, 10/100/1000BaseT(X) or 100/1000BaseSFP
	Multi-mode, ST Connector	Multi-mode, SC Connector	Single mode, SC Connector	
PM-7500-2MST	2	–	–	–
PM-7500-2MSC	–	2	–	–
PM-7500-2SSC	–	–	2	–
PM-7500-4MST	2	–	–	–
PM-7500-4MSC	–	2	–	–
PM-7500-4SSC	–	–	2	–
PM-7500-2GTXSFP	–	–	–	2
PM-7500-4GTXSFP	–	–	–	4

#### Package Checklist

- PM-7500 interface modules
- Warranty card